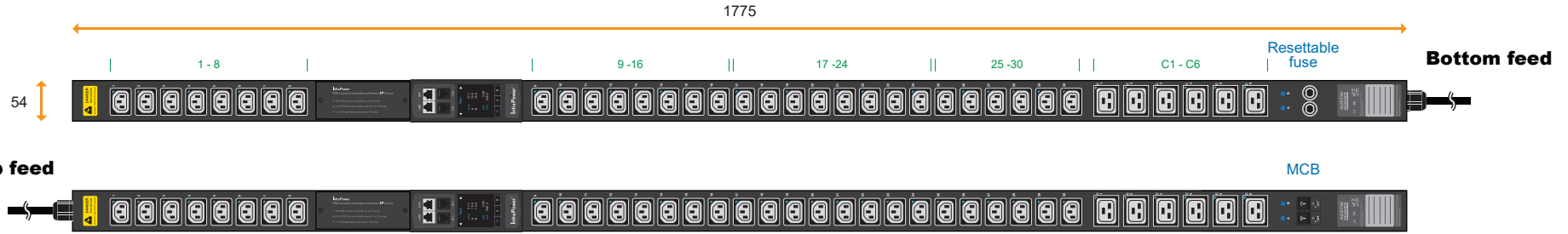


# 1-Phase switched PDU + outlet measurement specification drawing

230V 16A / 20A / 32A PDU : C13 x 30 + C19 x 6

unit : mm



PDU Feed	Code
Bottom	<b>B</b>
Top	<b>T</b>



32A model :	Circuit Protection
V30C13/6C19-32A-WSi/F_EN/3 <b>B</b> -1	Resettable Fuse x 2
V30C13/6C19-32A-WSi/CR_EN/3 <b>T</b> -1	1-pole MCB x 2

Input Rating : 32Amp, 230V  
Cordset : 3 meter 4.0mm sq. H05V V-F cordset  
Protection : 16A resettable fuse or 16A hydraulic MCB x 2  
Circuit A : Output 16A max., C13 #1-15 + C19 #C1-C3  
Circuit B : Output 16A max., C13 #16-30 + C19 #C4-C6  
Weight : Net 8.67 Kg / Gross 10.6 Kg

Chassis Color	Code
Black	<b>1</b>
White	<b>2</b>
Red	<b>3</b>
Blue	<b>4</b>
Green	<b>5</b>
Orange	<b>6</b>
Yellow	<b>7</b>
Purple	<b>8</b>



20A model :	Circuit Protection
V30C13/6C19-20A-WSi/F_OE/3 <b>B</b> -1	Resettable Fuse x 1
V30C13/6C19-20A-WSi/CR_OE/3 <b>T</b> -1	1-pole MCB x 1

Input Rating : 20Amp, 230V  
Cordset : 3 meter 2.5mm sq. H05V V-F cordset  
Protection : 20A resettable fuse or 20A hydraulic MCB x 1  
Circuit : Output 20A max., C13 #1-30 + C19 #C1-C6  
Weight : Net 7.91 Kg / Gross 9.84 Kg



16A model :	Circuit Protection
V30C13/6C19-16A-WSi/F_EN/3 <b>B</b> -1	Resettable Fuse x 1
V30C13/6C19-16A-WSi/CR_EN/3 <b>T</b> -1	1-pole MCB x 1

Input Rating : 16Amp, 230V  
Cordset : 3 meter 1.5mm sq. H05V V-F cordset  
Protection : 16A resettable fuse or 16A hydraulic MCB x 1  
Circuit : Output 16A max., C13 #1-30 + C19 #C1-C6  
Weight : Net 7.84 Kg / Gross 9.77 Kg



16A model :	Circuit Protection
V30C13/6C19-16A-WSi/F_C20/3 <b>B</b> -1	Resettable Fuse x 1
V30C13/6C19-16A-WSi/CR_C20/3 <b>T</b> -1	1-pole MCB x 1

Input Rating : 16Amp, 230V  
Cordset : 3 meter 1.5mm sq. H05V V-F cordset  
Protection : 16A resettable fuse or 16A hydraulic MCB x 1  
Circuit : Output 16A max., C13 #1-30 + C19 #C1-C6  
Weight : Net 7.76 Kg / Gross 9.69 Kg

Operating Temperature : -5 to 60 °C  
Storage Temperature : -25 to 65 °C  
Operating Altitude : 0 to 2,000 m  
Storage Altitude : 0 to 15,000 m  
Humidity : 8 to 95% RH, non-condensing

### Meter Features ( WSi Switched PDU + Outlet Measurement )

Local Display : Field replaceable 2.8" color LCD with touchscreen  
Bank Measurement : Current ( A ), Energy ( kWh ), Voltage ( V ) & Power factor  
Outlet Measurement : Current ( A ), Energy ( kWh )  
Outlet Control : Outlet Switch ON / OFF  
Accuracy : ±1% Billing-grade  
IP Access : via IP dongle, one IP Access up to 16 PDU Levels  
Cascade : Up to 16 PDU under single IP address via IP dongle  
SNMP : V2 / V3 via IP dongle  
Sensor Port x 2 : Temp. Sensor / Temp. + Humid. Sensor

EMC Compliance : CE / EMC certified  
Safety Compliance : CE / LVD certified  
Environment Compliance : RoHS2 & REACH

**AUSTIN HUGHES**  
Design. Manufacturing. Global Services.

The company reserves the right to modify product specifications without prior notice and assumes no responsibility for any error which may appear in this publication.

Copyright 2020 Austin Hughes Electronics Ltd. All rights reserved.

Product Dimension : 54 (W) x 80 (D) x 1775 (H) mm  
Packing dimension ( for 2 PDUs ) : 110 (W) x 268 (D) x 2168 (H) mm

## Lockable IEC Outlet

- Patented design for InfraPower PDU



C13 Outlet



C19 Outlet

## Lockable IEC Cable

- Patented design of InfraPower PDU
- Low cost, easy to lock & secure
- Proprietary for lockable IEC outlet
- Applicable to standard IEC outlet
- 6 colors & 3 lengths available
- Custom color & length on request
- VDE & ENEC approval

### C13 - C14

H05VV-F 3G 0.75mm<sup>2</sup>

Cable Color	0.5M	1M	2M
Black	✓	✓	✓
Grey	✓	✓	✓
Red	✓	✓	✓
Blue	✓	✓	✓
Green	✓	✓	✓
Orange	✓	✓	✓



### C19 - C20

H05VV-F 3G 1.5mm<sup>2</sup>

Cable Color	1M	2M
Black	✓	✓
Grey	✓	✓
Red	✓	✓
Blue	✓	✓
Green	✓	✓
Orange	✓	✓



C13 - C14



lockable cable

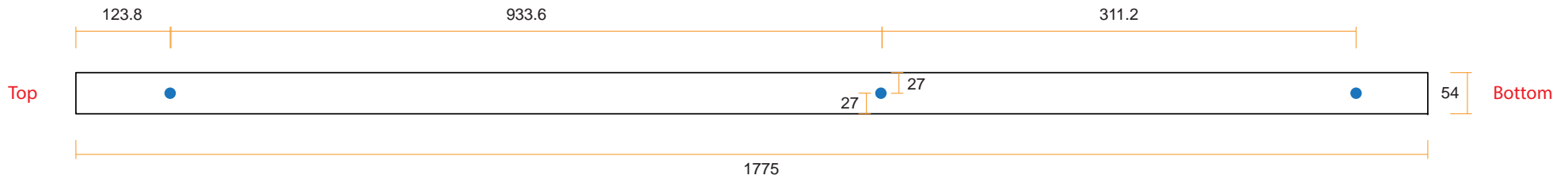
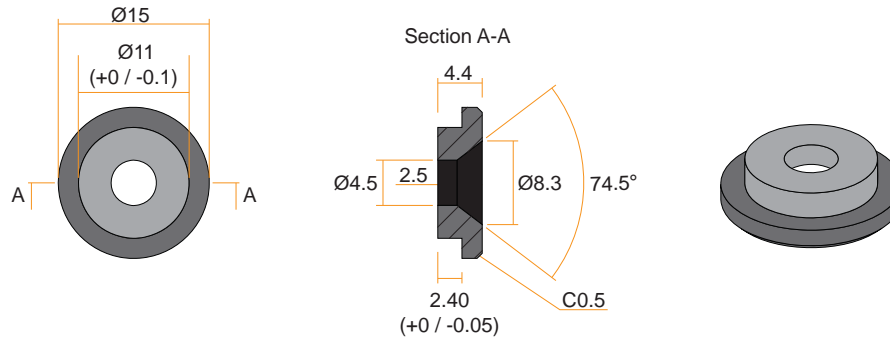
C19 - C20

- ✓ low cost
- ✓ easy to lock
- ✓ secure





### VMS Mounting Button

 x 3 +  x 3  
**M4 Screw**  
 - Flat head  
 - M4x10mm  
**PEG**



### VMB Mounting Bracket

 x 4 +  x 2  
**M3.2 Screw**  
 - Flat head  
 - M3.2x6mm  
**Bracket**

