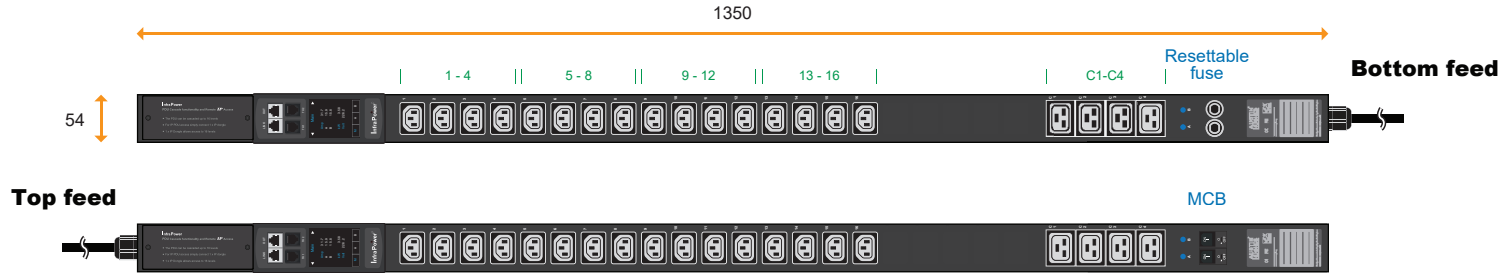


# 1-Phase monitored PDU specification drawing

230V 16A / 20A / 32A PDU : C13 x 16 + C19 x 4

unit : mm



Circuit Protection	Code
Fuse	<b>F</b>
MCB	<b>CR</b>



IEC 60309 Inlet

32A model :	Circuit Protection
V16C13/4C19-32A-W/ <b>F</b> _EN/3 <b>B</b> -1	Resettable Fuse x 2
V16C13/4C19-32A-W/ <b>CR</b> _EN/3 <b>T</b> -1	1-pole MCB x 2

Input Rating : 32Amp, 230V  
Cordset : 3 meter 4.0mm sq. H05V V-F cordset  
Protection : 16A resettable fuse or 16A hydraulic MCB x 2  
Circuit A : Output 16A max., C13 #1-8 + C19 #C1-C2  
Circuit B : Output 16A max., C13 #9-16 + C19 #C3-C4  
Weight : Net 5.50 Kg / Gross 7.12 Kg

PDU Feed	Code
Bottom	<b>B</b>
Top	<b>T</b>



Open end

20A model :	Circuit Protection
V16C13/4C19-20A-W/ <b>F</b> _OE/3 <b>B</b> -1	Resettable Fuse x 1
V16C13/4C19-20A-W/ <b>CR</b> _OE/3 <b>T</b> -1	1-pole MCB x 1

Input Rating : 20Amp, 230V  
Cordset : 3 meter 2.5mm sq. H05V V-F cordset  
Protection : 20A resettable fuse or 20A hydraulic MCB x 1  
Circuit : Output 20A max., C13 #1-16 + C19 #C1-C4  
Weight : Net 4.82 Kg / Gross 6.44 Kg

Chassis Color	Code
Black	<b>1</b>
White	<b>2</b>
Red	<b>3</b>
Blue	<b>4</b>
Green	<b>5</b>
Orange	<b>6</b>
Yellow	<b>7</b>
Purple	<b>8</b>



IEC 60309 Inlet

16A model :	Circuit Protection
V16C13/4C19-16A-W/ <b>F</b> _EN/3 <b>B</b> -1	Resettable Fuse x 1
V16C13/4C19-16A-W/ <b>CR</b> _EN/3 <b>T</b> -1	1-pole MCB x 1

Input Rating : 16Amp, 230V  
Cordset : 3 meter 1.5mm sq. H05V V-F cordset  
Protection : 16A resettable fuse or 16A hydraulic MCB x 1  
Circuit : Output 16A max., C13 #1-16 + C19 #C1-C4  
Weight : Net 4.75 Kg / Gross 6.37 Kg



IEC320 C20

16A model :	Circuit Protection
V16C13/4C19-16A-W/ <b>F</b> _C20/3 <b>B</b> -1	Resettable Fuse x 1
V16C13/4C19-16A-W/ <b>CR</b> _C20/3 <b>T</b> -1	1-pole MCB x 1

Input Rating : 16Amp, 230V  
Cordset : 3 meter 1.5mm sq. H05V V-F cordset  
Protection : 16A resettable fuse or 16A hydraulic MCB x 1  
Circuit : Output 16A max., C13 #1-16 + C19 #C1-C4  
Weight : Net 4.67 Kg / Gross 6.29 Kg

Standard color : Black

Operating Temperature : -5 to 60 °C  
Storage Temperature : -25 to 65 °C  
Operating Altitude : 0 to 2,000 m  
Storage Altitude : 0 to 15,000 m  
Humidity : 8 to 95% RH, non-condensing

### Meter Features ( W monitored PDU )

Local Display : Field replaceable 2.8" color LCD with touchscreen  
Bank Measurement : Current ( A ), Energy ( kWh ), Voltage ( V ) & Power factor  
Accuracy : ±1% Billing-grade  
IP Access : via IP dongle, one IP Access up to 16 PDU Levels  
Cascade : Up to 16 PDU under single IP address via IP dongle  
SNMP : V2 / V3 via IP dongle  
Sensor Port x 2 : Temp. Sensor / Temp. + Humid. Sensor

EMC Compliance : CE / EMC certified  
Safety Compliance : CE / LVD certified  
Environment Compliance : RoHS2 & REACH

**AUSTIN HUGHES**  
Design. Manufacturing. Global Services.

The company reserves the right to modify product specifications without prior notice and assumes no responsibility for any error which may appear in this publication.

Copyright 2020 Austin Hughes Electronics Ltd. All rights reserved.

Product Dimension : 54 (W) x 80 (D) x 1350 (H) mm  
Packing dimension ( for 2 PDUs ) : 110 (W) x 268 (D) x 1793 (H) mm

## Lockable IEC Outlet

- Patented design for InfraPower PDU



C13 Outlet



C19 Outlet

## Lockable IEC Cable

- Patented design of InfraPower PDU
- Low cost, easy to lock & secure
- Proprietary for lockable IEC outlet
- Applicable to standard IEC outlet
- 6 colors & 3 lengths available
- Custom color & length on request
- VDE & ENEC approval

### C13 - C14

H05VV-F 3G 0.75mm<sup>2</sup>

Cable Color	0.5M	1M	2M
Black	✓	✓	✓
Grey	✓	✓	✓
Red	✓	✓	✓
Blue	✓	✓	✓
Green	✓	✓	✓
Orange	✓	✓	✓



### C19 - C20

H05VV-F 3G 1.5mm<sup>2</sup>

Cable Color	1M	2M
Black	✓	✓
Grey	✓	✓
Red	✓	✓
Blue	✓	✓
Green	✓	✓
Orange	✓	✓



C13 - C14

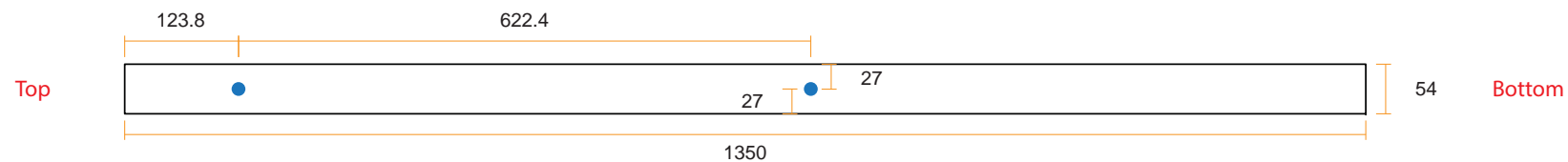
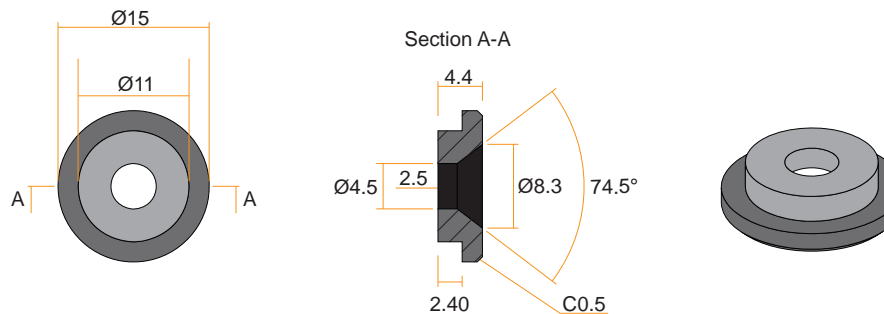
lockable cable

C19 - C20

- ✓ low cost
- ✓ easy to lock
- ✓ secure



### VMS Mounting Button



### VMB Mounting Bracket

