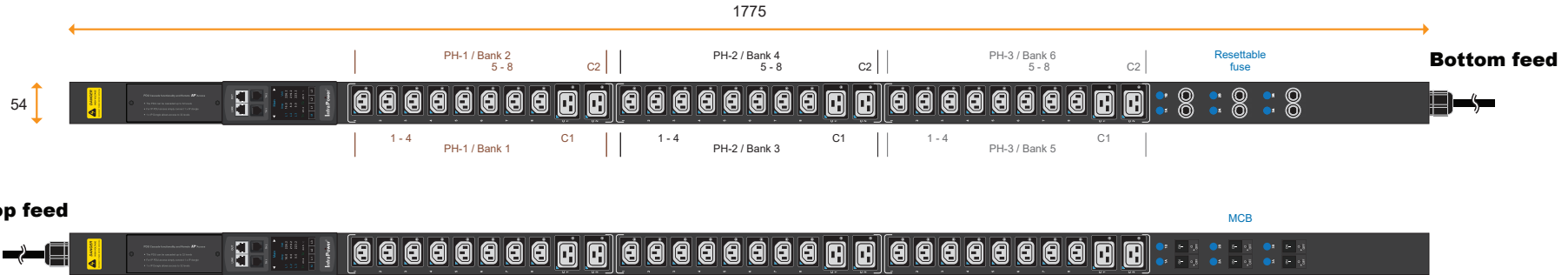


# 3-Phase switched PDU + outlet measurement specification drawing

## 400V 16A / 32A PDU : C13 x 24 + C19 x 6

unit : mm



Circuit Protection	Code
Fuse	<b>F</b>
MCB	<b>CR</b>



32A model :	Circuit Protection
VP24C13/6C19-32A-WSi <b>F</b> _EN/2 <b>B</b> -1	Resettable Fuse x 6
VP24C13/6C19-32A-WSi <b>CR</b> _EN/2 <b>T</b> -1	1-pole MCB x 6

- Input Rating : 32Amp, 400V 3PH
- Cordset : 5-wire 2 meter 4mm sq. H05V V-F cordset
- Protection : 16A resettable fuse or 16A single pole hydraulic MCB x 6
- PH-1 - Bank 1 : Output 16A max., C13 #1-4 + C19 #C1
- Bank 2 : Output 16A max., C13 #5-8 + C19 #C2
- PH-2 - Bank 3 : Output 16A max., C13 #1-4 + C19 #C1
- Bank 4 : Output 16A max., C13 #5-8 + C19 #C2
- PH-3 - Bank 5 : Output 16A max., C13 #1-4 + C19 #C1
- Bank 6 : Output 16A max., C13 #5-8 + C19 #C2
- Weight : Net 12.20 Kg / Gross 14.20 Kg

PDU Feed	Code
Bottom	<b>B</b>
Top	<b>T</b>

Chassis Color	Code
Black	<b>1</b>
White	<b>2</b>
Red	<b>3</b>
Blue	<b>4</b>
Green	<b>5</b>
Orange	<b>6</b>
Yellow	<b>7</b>
Purple	<b>8</b>



16A model :	Circuit Protection
VP24C13/6C19-16A-WSi <b>F</b> _EN/2 <b>B</b> -1	Resettable Fuse x 3
VP24C13/6C19-16A-WSi <b>CR</b> _EN/2 <b>T</b> -1	1-pole MCB x 3

- Input Rating : 16Amp, 400V 3PH
- Cordset : 5-wire 2 meter 1.5mm sq. H05V V-F cordset
- Protection : 16A resettable fuse or 16A single pole hydraulic MCB x 3
- PH-1 : Output 16A max., C13 #1-8 + C19 #C1-C2
- PH-2 : Output 16A max., C13 #1-8 + C19 #C1-C2
- PH-3 : Output 16A max., C13 #1-8 + C19 #C1-C2
- Weight : Net 12.20 Kg / Gross 14.20 Kg

Standard color : Black

Operating Temperature : -5 to 60 °C  
Storage Temperature : -25 to 65 °C  
Operating Altitude : 0 to 2,000 m  
Storage Altitude : 0 to 15,000 m  
Humidity : 8 to 95% RH, non-condensing

**Meter Features ( WSi Switched PDU + Outlet Measurement )**  
Local Display : Field replaceable 2.8" color LCD with touchscreen  
Bank Measurement : Current ( A ), Energy ( kWh ), Voltage ( V ) & Power factor  
Outlet Measurement : Current ( A ), Energy ( kWh )  
Outlet Control : Outlet Switch ON / OFF  
Accuracy : ±1% Billing-grade  
IP Access : via IP dongle, one IP Access up to 32 PDU Levels  
Cascade : Up to 32 PDU under single IP address via IP dongle  
SNMP : V2 / V3 via IP dongle  
Sensor Port x 2 : Temp. Sensor / Temp. + Humid. Sensor

EMC Compliance : CE / EMC  
Safety Compliance : Tested to EN 62368-1:2014 / A11:2017 standard  
Tested to EN 60730-1:2016 / A1:2019 standard  
Environment Compliance : RoHS3 & REACH

**AUSTIN HUGHES**  
Design. Manufacturing. Global Services.

The company reserves the right to modify product specifications without prior notice and assumes no responsibility for any error which may appear in this publication.

Copyright 2021 Austin Hughes Electronics Ltd. All rights reserved.

**IP dongle ( option )**  
- Dual LAN Network Failover  
- 10/100 Ethernet & Gigabit Ethernet standard  
- Enterprise IP Authentication, LDAPV3 / LDAPS, Active Directory®, RADIUS protocol

Product Dimension : 54 (W) x 80 (D) x 1775 (H) mm  
Packing dimension ( for 2 PDUs ) : 110 (W) x 268 (D) x 2043 (H) mm

## Lockable IEC Outlet

- Patented design for InfraPower PDU



C13 Outlet



C19 Outlet

## Lockable IEC Cable

- Patented design of InfraPower PDU
- Low cost, easy to lock & secure
- Proprietary for lockable IEC outlet
- Applicable to standard IEC outlet
- 6 colors & 3 lengths available
- Custom color & length on request
- VDE & ENEC approval

### C13 - C14

H05VV-F 3G 0.75mm<sup>2</sup>

Cable Color	0.5M	1M	2M
Black	✓	✓	✓
Grey	✓	✓	✓
Red	✓	✓	✓
Blue	✓	✓	✓
Green	✓	✓	✓
Orange	✓	✓	✓



### C19 - C20

H05VV-F 3G 1.5mm<sup>2</sup>

Cable Color	1M	2M
Black	✓	✓
Grey	✓	✓
Red	✓	✓
Blue	✓	✓
Green	✓	✓
Orange	✓	✓



C13 - C14



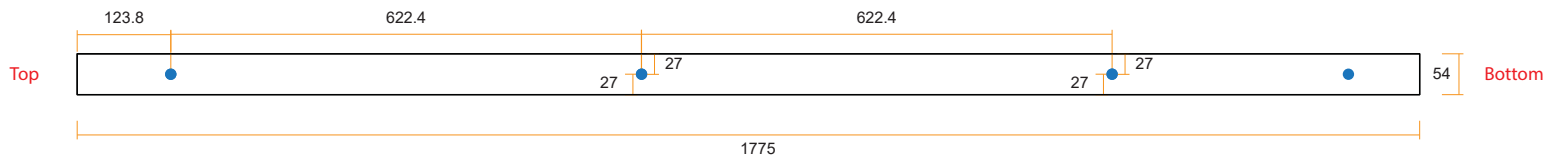
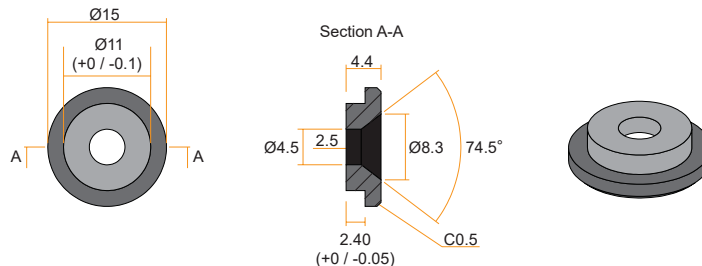
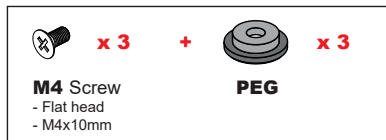
lockable cable

- ✓ low cost
- ✓ easy to lock
- ✓ secure

C19 - C20



### VMS Mounting Button



### VMB Mounting Bracket

