



ADDERView® CCS-MV 4224

Multi-Viewer

Command and control multi-viewer switch for sharing 4K video, keyboard and mouse, plus audio between four computers. Innovative hybrid DisplayPort™ and HDMI® input ports for flexible connectivity.

Features

Video performance

Up to UHD 4K video output resolution is generated, thus providing a crystal clear display, even with a quad window layout.

Automatic switching

Natural automatic switching of KVM and audio control between ports without the need to press any buttons. Simply move the mouse between windows.

Flexible screen layout

Use preset window layouts, or move and resize windows to create custom layouts. Dual output ports allow for extended or duplicated displays.

Channel identification

Configure a meaningful name, plus port LED and window border colors for each channel to aid fast channel identification and optimized situational awareness.

USB performance

Emulated USB2.0 ports for fast switching of HID (Human Interface Devices), such as keyboard and mouse. Hi-speed USB3.0 switched port for mass storage and isochronous devices, including flash drives, headsets and web cams.

Flexible computer connections

Connect to a combination of single and dual-head computers.

Analog audio

Bi-directional analog audio. An audio 'Hold' facility assigns the audio connection to a specific computer whilst the KVM is switched to another computer. Useful when a user needs to talk to one channel, whilst working on another.

Digital audio mixer

Option to combine audio signal from multiple HDMI® channels. Adjust the volume level for each channel.

Copy & Paste

Copy text between Windows 10 computers using standard keyboard, Ctrl+C and Ctrl+V commands.

Remote control

Select layout presets and input channels remotely for control room applications where the displays are used to aid situation awareness.

Matrix integration

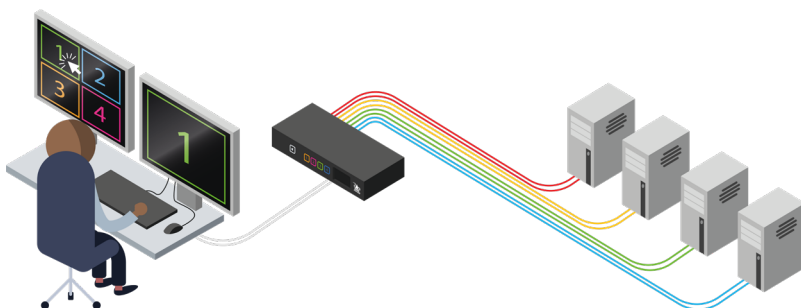
The ADDERView® CCS-MV 4224 may be connected to the ADDERLink® INFINITY matrix system. This allows the user to control any 4 computers connected to the matrix network.



Product in Brief

The ADDERView® CCS-MV, a desktop multi-viewer switch, provides simultaneous, real-time 4K KVMA (Keyboard, Video, Mouse and Audio) access of up to four computers from a single workstation. Users can instantly take control of the target computer by simply moving the mouse between windows, providing the experience of a single desktop.

- Directly connect a single workstation to four video, audio and USB sources
- Access any number of sources on a network when combined with an ADDERLink® INFINITY IP KVM Matrix
- Seamless cursor interaction with sources as if using a single desktop
- Multiple window layouts for real-time data visualization and improved decision making
- Enhanced, decluttered workspace ergonomics and improved situational awareness



Technical Specifications

Video resolutions

- The system supports video resolutions up to UHD 4K (3840x2160 @30Hz) at 4:4:4 with 8 bits per color

Software compatibility

- Windows, Linux, Mac host computer OS's

Console connections

- 2x digital ports for HDMI®, 2x USB 2.0 full speed Type A, 4x USB3.0 Hi-speed Type A. Audio 3.5mm/0.13" jack for microphone and headphones, RJ12 serial port

Computer connections

- 4x dual ports for DisplayPort™/HDMI®, 4x USB2.0 full speed Type B, 4x USB 3.0 Hi-speed Type B, Audio 3.5mm line in and out

Front Panel

- Audio hold button and status LED, 4x Channel selection button and status LED, 212x104 E-paper status display

Physical design

- Robust metal construction
- 344mm/13.54"(W) x 44mm/1.73"(H) x 161mm/6.34"(D)
- Weight: 1.6kg/3.53lbs

Power supply

- 100-240V AC, 47/63Hz
- 12V DC 30W output from power supply unit

Environmental

- Operating temperature: 0°C to 40°C/32°F to 104°F
- Storage temperature: -20° to 60°C/-4° to 140°F
- Humidity: 0-80% RH, non-condensing
- MTBF: 84k hours @ 40°C

Approvals

- UKCA, CE, FCC class A, TUV US & Canada



ADDERView CCS-MV 4224 - Front



ADDERView CCS-MV 4224 - Rear

Ordering Information

CCS-MV4224: ADDERView® Multi-Viewer
4-port 4K Desktop Switch

What's in the Box?

- 1x CCS-MV 4224 4K switch
- 1x Power supply unit with mains cable
- 1x Quick start guide

Accessories (Sold separately)

- RMK13:** Rackmount kit
- VSCD18:** 2m/6.5ft DisplayPort™ video cable
- VSCD15:** 2m/6.5ft HDMI® video cable
- VSC22:** 2m/6.5ft Audio cable
- VSC24:** 2m/6.5ft USB cable Type A to Type B

About Adder

Adder is a leading developer and thought leader in connectivity solutions. Adder's advanced range of KVM switches, extenders and IP solutions enable the control of local, remote and global IT systems across the enterprise. The company distributes its products in more than 60 countries through a network of distributors, resellers and OEMs.

Adder has offices in China, Germany, Japan, the Netherlands, Singapore, Spain, France, Sweden, United Kingdom and United States.

To find out more, visit: adder.com

Global Headquarters

Tel: +44 (0)1954 780044 | Fax: +44 (0)1954 780081
Email: sales@adder.com

Americas

Tel: +1 888 932 3337 | Fax: +1 888 275 1117
Email: usasales@adder.com

Asia Pacific

Tel: +65 6288 5767 | Fax: +65 6284 1150
Email: asiasales@adder.com

Adder and the Adder logo are trademarks of Adder Technology Ltd, Cambridge, UK. All other trademarks are the property of their respective owner and may be registered in the United States Patent and Trademark Office and in other countries. Copyright 2022 | Adder Technology Ltd. | ADDER_DS093_EN v5_FINAL
Information contained in this data sheet is up-to-date and correct as at the date of issue. As Adder Technology cannot control or anticipate the conditions under which this product may be used, each user should review the information in the specific context of planned use. Images are for illustrative purposes only.

ADDER®
THE IP KVM PEOPLE

DATA
SHEET