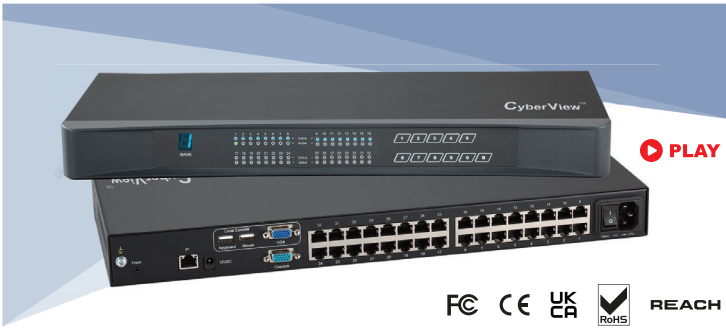


## Cat6 KVM



FC CE UK CA RoHS REACH

### Benefits

- Cat6 KVM with 8, 16 or 32 ports in 1U
- Cat6 dongle available for USB-C, DP, HDMI, DVI-D or VGA video input
- Local console & KVM ports support resolution up to 1920 x 1200
- Multi-platform for PC, server, Blade Server & SUN / MAC
- Port switching via OSD, front button & keyboard hotkeys
- Multi lingual OSD menu
- Hot pluggable, no software or drivers required
- Cascade levels up to 8 KVM switches

### Options

- DC power options : 12V / 24V / 48V / 125V
- Dual power with failover



**DG-100C**  
USB-C dongle



**DG-100P**  
DP-USB dongle



**DG-100H**  
HDMI-USB dongle

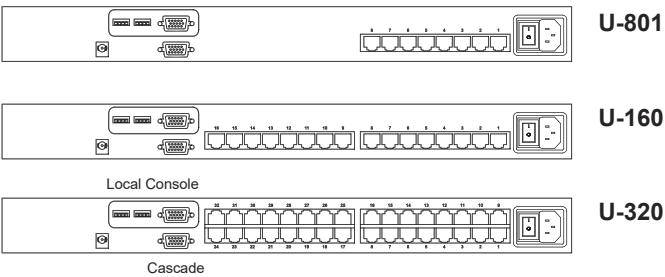


**DG-100SD**  
DVI-USB dongle



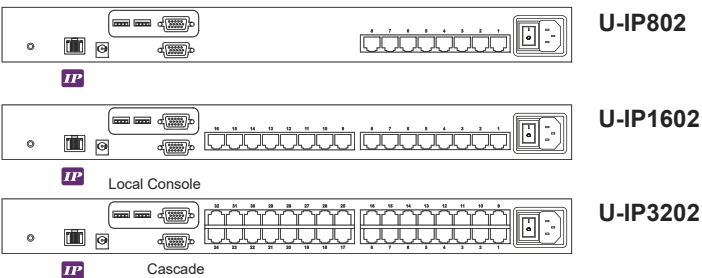
**DG-100S**  
VGA-USB dongle

### Basic Models - local console x 1



KVM Port	
Port # :	8, 16 or 32
Connector :	RJ-45
Connectivity :	DP / HDMI / DVI-D / VGA dongle via Cat6 / Cat5 cable to server up to 40 meters (132 feet)
Resolution :	16:10 - max. 1920 x 1200 16:9 - max. 1920 x 1080 4:3 - max. 1600 x 1200
Local Console	
Graphic Connector :	1 x DB-15 VGA
Input device :	2 x USB type A for keyboard & mouse
Resolution :	16:10 - max. 1920 x 1200 16:9 - max. 1920 x 1080 4:3 - max. 1600 x 1200

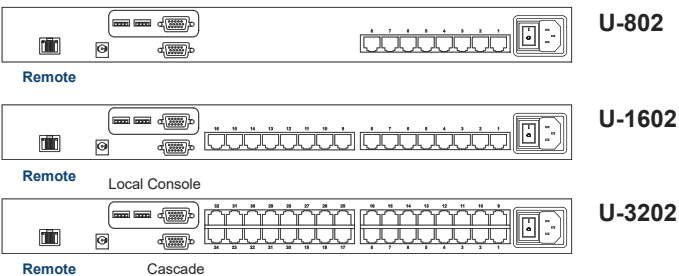
### IP Models - local console + IP console



IP Console	
Connector :	RJ45
User management :	1 x active user, 15-user login
Network protocol :	DHCP / BOOTP / DNS
Security :	TLS 1.3, AES, LDAP, Active Directory (AD), HTTP(s)
Browser :	Chrome, Firefox, Edge, etc.
Resolution :	16:9 - max. 1920 x 1080 / 16:10 - max. 1920 x 1200 / 4:3 - max. 1600 x 1200

High Performance KVM Access Over IP

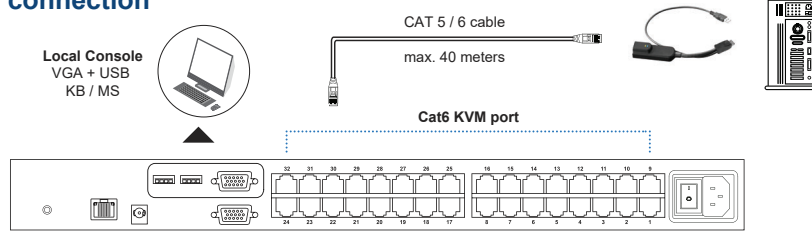
### Remote Models - local console + remote console



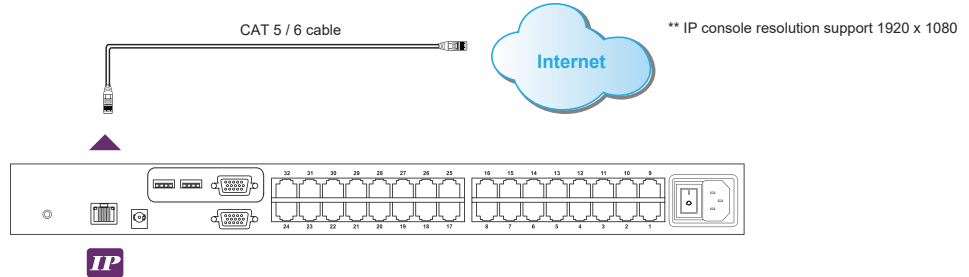
Remote Console	
Connector :	RJ45
Connection :	via Cat5 / Cat6 cable to receiver box
Receiver box I/O :	VGA + 2 x USB type A for keyboard & mouse
Resolution :	16:9 - ( 1920 x 1080 ) Max. 50 meters 16:10 - ( 1920 x 1200 ) Max. 50 meters 16:10 - ( 1440 x 900 ) Max. 100 meters 4:3 - ( 1600 x 1200 ) Max. 100 meters 4:3 - ( 1280 x 1024 ) Max. 150 meters

Receiver box

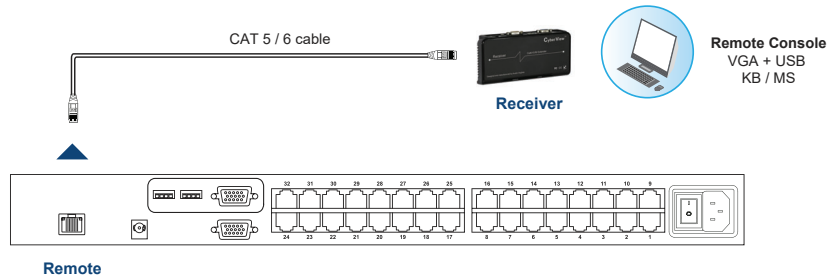
## Local console & KVM port connection



## IP console connection

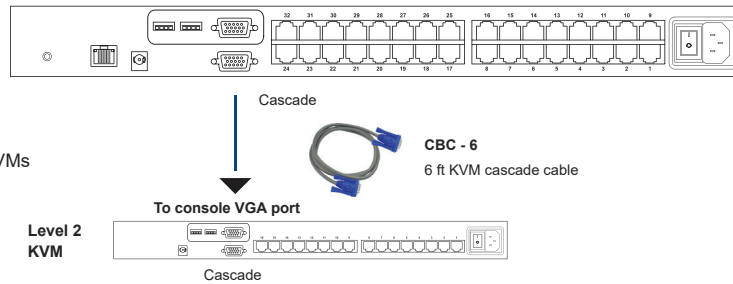


## Remote console connection



## KVM Cascade

- 8-level cascade up to 256 servers
- KVM cascade via CBC-6
- Level 2 - 8 KVM must be basic models :  
U-801 / U-1601 / U-3201
- 1st level KVM takes all control of slave KVMs



### Management

Port switching	OSD, front button & keyboard hotkeys
Expansion	8-level cascade up to 256 servers

### Compatibility

Hardware	HP / IBM / Dell PC, Server and Blade Server SUN / Mac
OS support	Windows / Linux / Unix / Mac OS

### Environment

Operating temp.	0 to 55°C degree
Storage temp.	-20 to 60°C degree
Operating humidity	10~90%, non-condensing
Storage humidity	5 ~90%, non-condensing
Operating altitude	16,000 ft
Non-operating altitude	40,000 ft
Shock	10G acceleration ( 11ms duration )
Vibration	10~300Hz 0.5G RMS random vibration

### Power

Input	Auto-sensing 100 to 240VAC, 50 / 60Hz
Consumption	Max. 22W

### Compliance

EMC	FCC & CE
Safety	CE / LVD & UKCA
Environment	REACH & RoHS3 / WEEE

### Physical

Product (W x D x H)	443 x 171 x 44 mm
	17.4 x 6.7 x 1.73 inch
Packing (W x D x H)	400 x 500 x 140 mm
	15.8 x 19.7 x 5.5 inch
Weight	Net 2.5 kg / 5.5 lb
	Gross 5.4 kg / 11.9 lb
Chassis color	Dark
Chassis materials	Steel