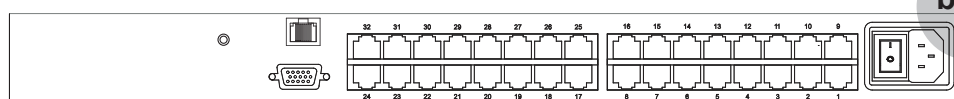


User Manual - KVM Rear Kit Version for LCD Console Drawer

Cat6 IP KVM

**-UIP802
-UIP1602
-UIP3202**

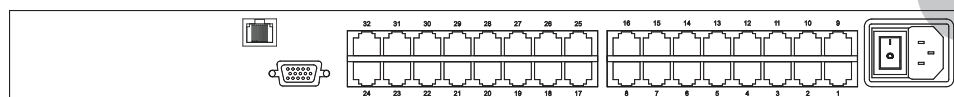


back



Cat6 2-console KVM

**-U802
-U1602
-U3202**

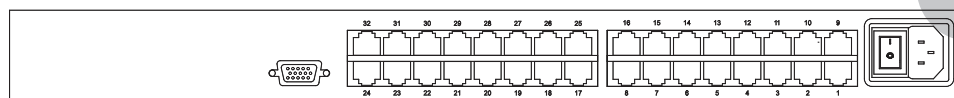


back



Cat6 KVM

**-U801
-U1601
-U3201**



back



Designed and manufactured by Austin Hughes

751

Intentionally
Left
Blank

Legal Information

First English printing, November 2020

Information in this document has been carefully checked for accuracy; however, no guarantee is given to the correctness of the contents. The information in this document is subject to change without notice. We are not liable for any injury or loss that results from the use of this equipment.

Safety Instructions

Please read all of these instructions carefully before you use the device. Save this manual for future reference.

- Unplug equipment before cleaning. Don't use liquid or spray detergent; use a moist cloth.
- Keep equipment away from excessive humidity and heat. Preferably, keep it in an air-conditioned environment with temperatures not exceeding 40° Celsius (104° Fahrenheit).
- When installing, place the equipment on a sturdy, level surface to prevent it from accidentally falling and causing damage to other equipment or injury to persons nearby.
- When the equipment is in an open position, do not cover, block or in any way obstruct the gap between it and the power supply. Proper air convection is necessary to keep it from overheating.
- Arrange the equipment's power cord in such a way that others won't trip or fall over it.
- If you are using a power cord that didn't ship with the equipment, ensure that it is rated for the voltage and current labeled on the equipment's electrical ratings label. The voltage rating on the cord should be higher than the one listed on the equipment's ratings label.
- Observe all precautions and warnings attached to the equipment.
- If you don't intend on using the equipment for a long time, disconnect it from the power outlet to prevent being damaged by transient over-voltage.
- Keep all liquids away from the equipment to minimize the risk of accidental spillage. Liquid spilled on to the power supply or on other hardware may cause damage, fire or electrical shock.
- Only qualified service personnel should open the chassis. Opening it yourself could damage the equipment and invalidate its warranty.
- If any part of the equipment becomes damaged or stops functioning, have it checked by qualified service personnel.

What the warranty does not cover

- Any product, on which the serial number has been defaced, modified or removed.
- Damage, deterioration or malfunction resulting from:
 - ☐ Accident, misuse, neglect, fire, water, lightning, or other acts of nature, unauthorized product modification, or failure to follow instructions supplied with the product.
 - ☐ Repair or attempted repair by anyone not authorized by us.
 - ☐ Any damage of the product due to shipment.
 - ☐ Removal or installation of the product.
 - ☐ Causes external to the product, such as electric power fluctuation or failure.
 - ☐ Use of supplies or parts not meeting our specifications.
 - ☐ Normal wear and tear.
 - ☐ Any other causes which does not relate to a product defect.
- Removal, installation, and set-up service charges.

Regulatory Notices Federal Communications Commission (FCC)

This equipment has been tested and found to comply with the limits for a Class B digital device, pursuant to Part 15 of the FCC rules. These limits are designed to provide reasonable protection against harmful interference in a residential installation.

Any changes or modifications made to this equipment may void the user's authority to operate this equipment. This equipment generates, uses, and can radiate radio frequency energy and, if not installed and used in accordance with the instructions, may cause harmful interference to radio communications.

However, there is no guarantee that interference will not occur in a particular installation. If this equipment does cause harmful interference to radio or television reception, which can be determined by turning the equipment off and on, the user is encouraged to try to correct the interference by one or more of the following measures:

- Re-position or relocate the receiving antenna.
- Increase the separation between the equipment and receiver.
- Connect the equipment into an outlet on a circuit different from that to which the receiver is connected.

Contents

< Part. 1 > Cat6 KVM

-UIP802	-UIP1602	-UIP3202
---------	----------	----------

1.1	Package Content	P.1
1.2	KVM port & Cat6 dongle connection	P.2
1.3	IP & Remote console connection	P.3
1.4	IP Console Setting	P.4
1.5	Important Preconfiguration for IP console	P.5 - 7
1.6	KVM Cascade	P.8
1.7	Specifications	P.9

< Part. 2 > Cat6 2-console KVM

-U802	-U1602	-U3202
-------	--------	--------

2.1	Package Contents	P.10
2.2	KVM port & Cat6 dongle connection	P.11
2.3	Remote console connection	P.12 - 13
2.4	KVM Cascade	P.14
2.5	Specifications	P.15

< Part. 3 > Cat6 KVM

-U801	-U1601	-U3201
-------	--------	--------

3.1	KVM Button	P.16
3.2	KVM port & Cat6 dongle connection	P.17
3.3	KVM Cascade	P.18
3.4	Specifications	P.19

< Part. 4 > Usage

4.1	KVM Button	P.20
4.2	Password	P.21
4.3	KVM OSD	P.22
4.4	KVM Hotkey & Remote Console Hotkey	P.23
4.5	DC Power Option : 12V / 24V / 48V / 125V	P.24

-UIP802
-UIP1602
-UIP3202

KVM Rear Kit

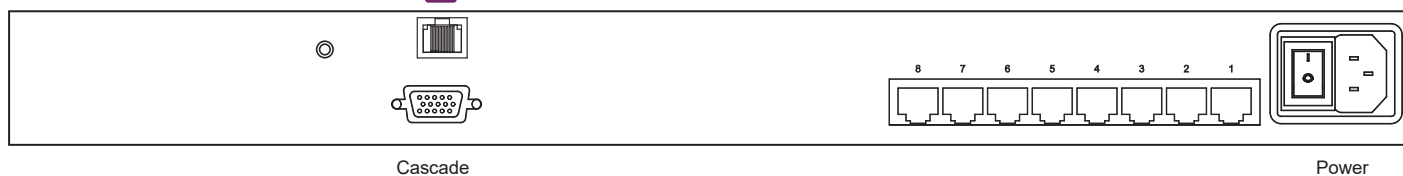


back

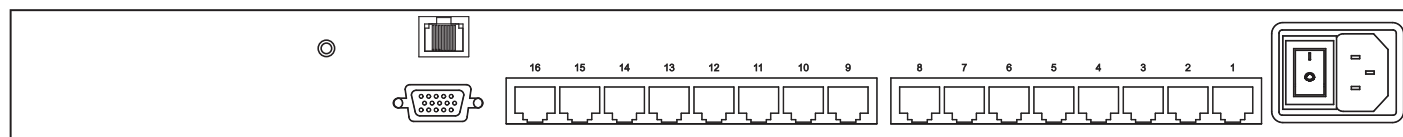


The power of the KVM rear kit may be changed to external power design based on the LCD console drawer series and model.

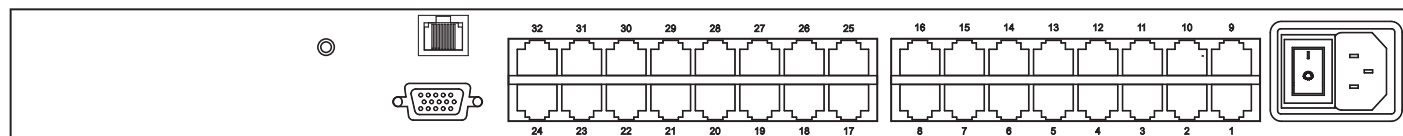
-UIP802



-UIP1602



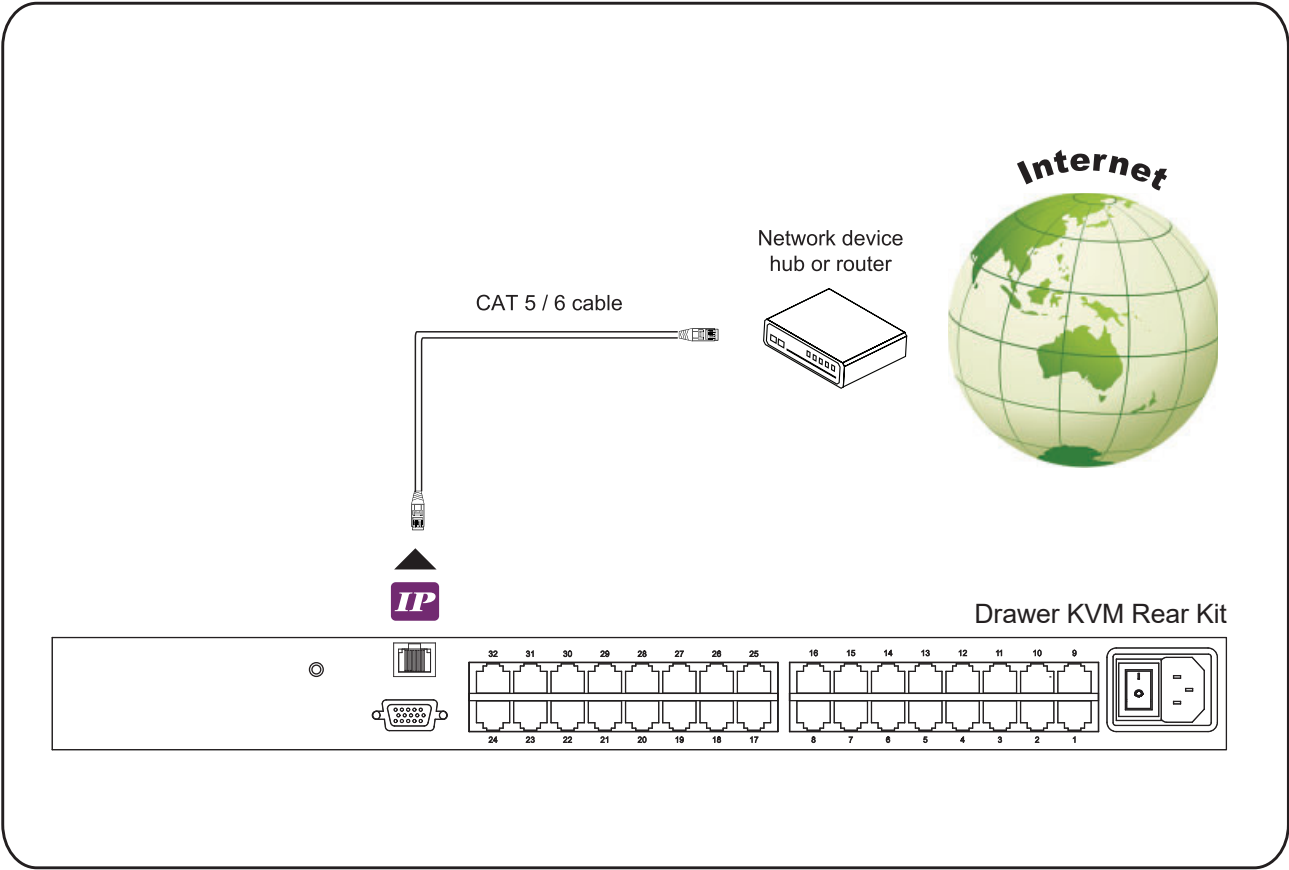
-UIP3202



Cat6 IP KVM



Resolution Support	Frequency (Hz)
1920 x 1200	60
1920 x 1080	60
1600 x 1200	60
1440 x 900	60
1280 x 1024	60
1024 x 768	60 / 70 / 75



IP Console

Resolution Support	Frequency (Hz)
1600 x 1200	60
1280 x 1024	60
1024 x 768	60 / 70 / 75

After the cable connection, please take the following steps to configure the IP KVM :

1. Download **IPKVMsetup.exe** from the link:

www.austin-hughes.com/support/utilities/cyberview/IPKVMsetup.exe

2. Double click **IPKVMsetup.exe** to configure the IP KVM by device setup as below.

3. Click **Refresh Device** to search the connected IP KVM
4. Select the M.A.C. address, which you want to setup, then click **Query Device**
5. Enter Super user login. **The default is super**
6. Enter Super user password. **The default is pass**
7. Enter the new super user password
8. Re-enter the new password
9. Change the desired IP address / Subnet mask / Gateway, then click **Setup Device** to confirm the setting to IP KVM
10. The default address is as below:--
 - The single IP KVM model, such as U-IP3202 - <http://192.168.1.22>

11. Open Internet Explorer (I.E.), version 6.0 or above

12. Enter the IP KVM address into the address bar
 - For Single IP - <http://192.168.1.22>

13. Enter username (default is super)
Password (default is pass)

14. After successful login to IP KVM, the user will enter the main page of IP KVM



The setting is enough for intranet.

If the users access KVM GUI via internet, please ask MIS for assistance and download IP KVM user manual from the link :

www.austin-hughes.com/support/usermanual/cyberview/UM-CV-IP.pdf



You must complete the following tasks after the IP console setting is performed.

(1) TARGET SERVER SETUP **Servers connected to KVM

Resolution

The IP KVM remote console recognizes several varieties of video display formats with resolutions up to 1600 x 1200 @60Hz. (Refer to the User Manual for a list of supported video formats). Minimize bandwidth by setting the target server's video resolution to the minimum setting required for your remote monitoring application.

The following video modes are recommended:

- (i) 1024 x 768 @ 60Hz
- (ii) 1280 x 1024 @ 60Hz

On a Windows target server system, select Control Panel > Display > Settings.
Modify the screen resolution value as necessary.

Mouse

Use generic mouse drivers for optimum mouse control during remote sessions. Set the mouse pointer speed to a middle setting with no acceleration or snap-to effects.

On a Windows target server system, select Control Panel > Mouse > Pointer Options
Set the pointer speed to medium and disable Enhanced pointer precision

For Linux GUIs, set the mouse acceleration to exactly 1 and the threshold to exactly 1.



If your keyboard keeps repeating keys when it is plugged into the KVM. Please follow either one below :

(a.)

Enable key release timeout if you experience duplicated keystrokes during poor network performance.

- login to IP KVM remote console
- go to Interfaces KVM settings > Keyboard / Mouse
- click the Key Release Timeout
- adjust Timeout after if necessary

(b.)

Reduce video bandwidth usage if you experience duplicated keystrokes during poor network

- login to IP KVM remote console
- go to Interfaces KVM Settings > User Console > Transmission Encoding,
- select Manually
- adjust Compression to [0-none] and Color depth to [8-bit – 256 col]

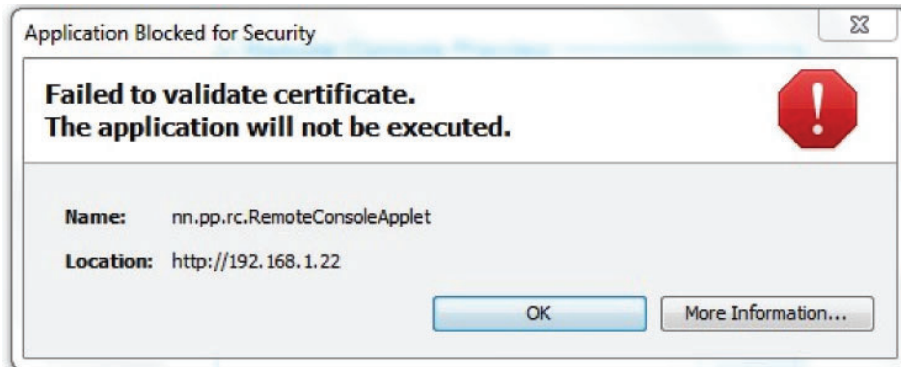
(2) REMOTE CLIENT COMPUTER SETUP

The remote client computer must have a web browser (such as Microsoft Internet Explorer, Mozilla Firefox, and Netscape Navigator) and a Java Virtual Machine (version 1.4 or higher) installed. Enable Java on the web browser.



JAVA Update for IP KVM

Due to the latest update from Java security, customer may face the "JAVA Block" message while accessing the remote console over IP as below :

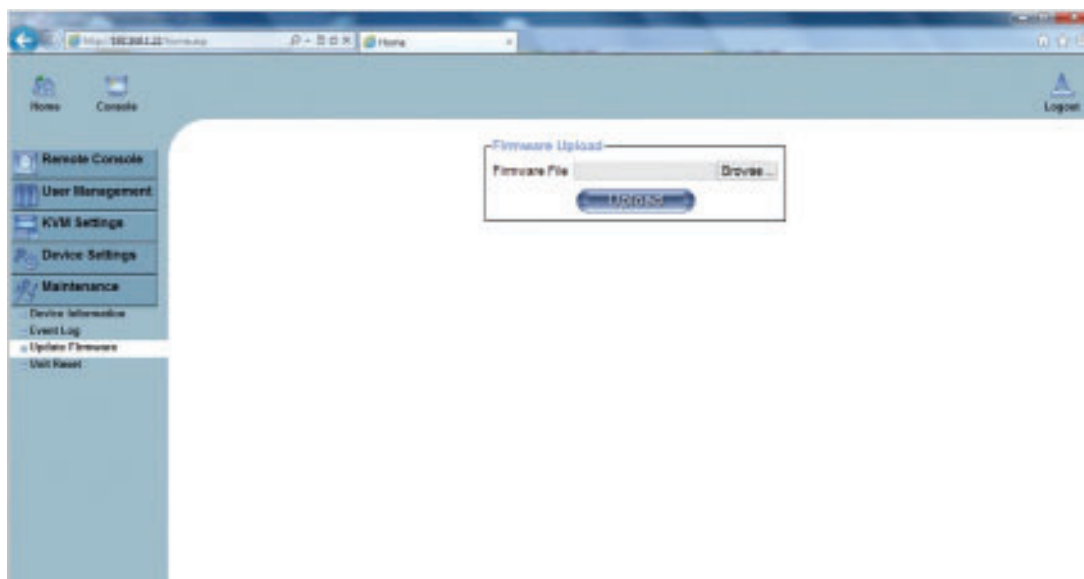


If it said so, please download the latest IP KVM firmware (version aust-i11-150608) from the link below : <http://www.austin-hughes.com/resources/software/kvm-switch>

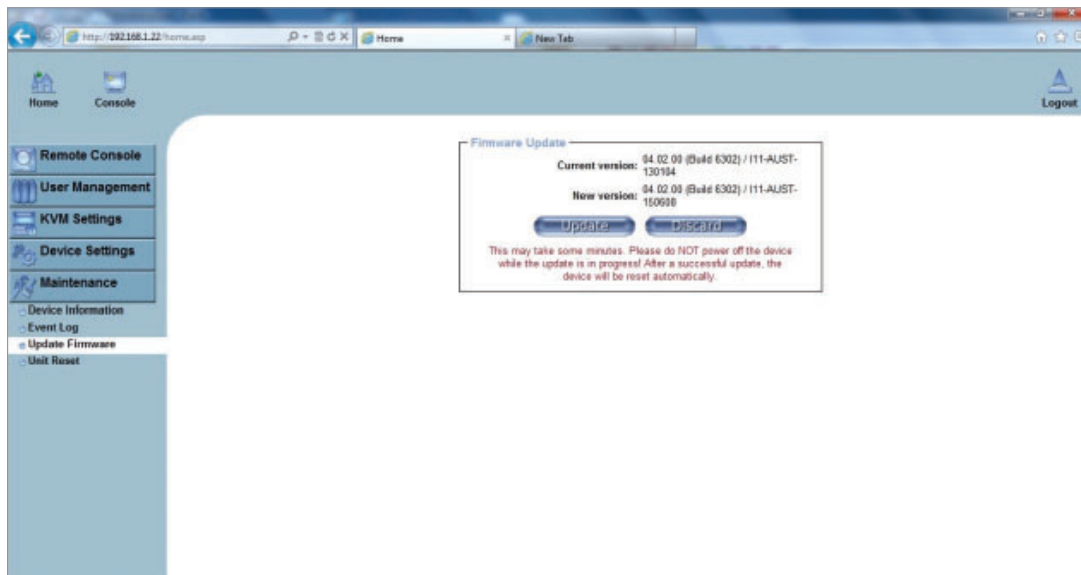
Then follow the attached steps to update the firmware.

Firmware Update Steps

- 1) Download the latest IP KVM firmware (version aust-i11-150608) from the link <http://www.austin-hughes.com/resources/software/kvm-switch>
- 2) Login the IP KVM
- 3) Click < Update Firmware >
- 4) Click < Browse > to select the firmware file
- 5) Click < Upload >

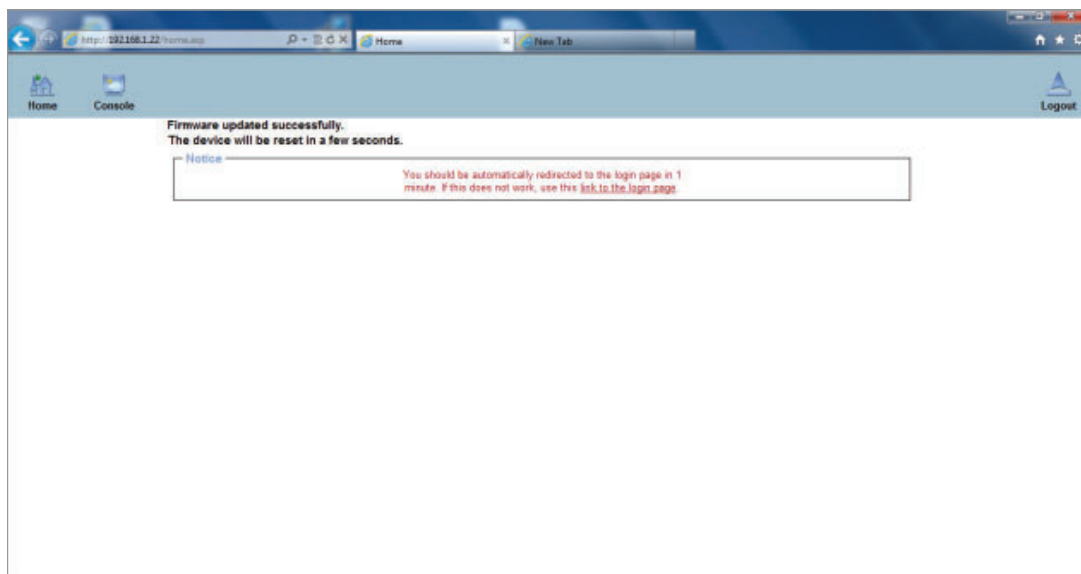


6) Click < Update >



After the firmware has been updated, IP KVM will reset automatically.

After one minute, you will be redirected to the Login page and requested to login again.



- Completed

< 1.6 > KVM Cascade

Cat6 IP KVM

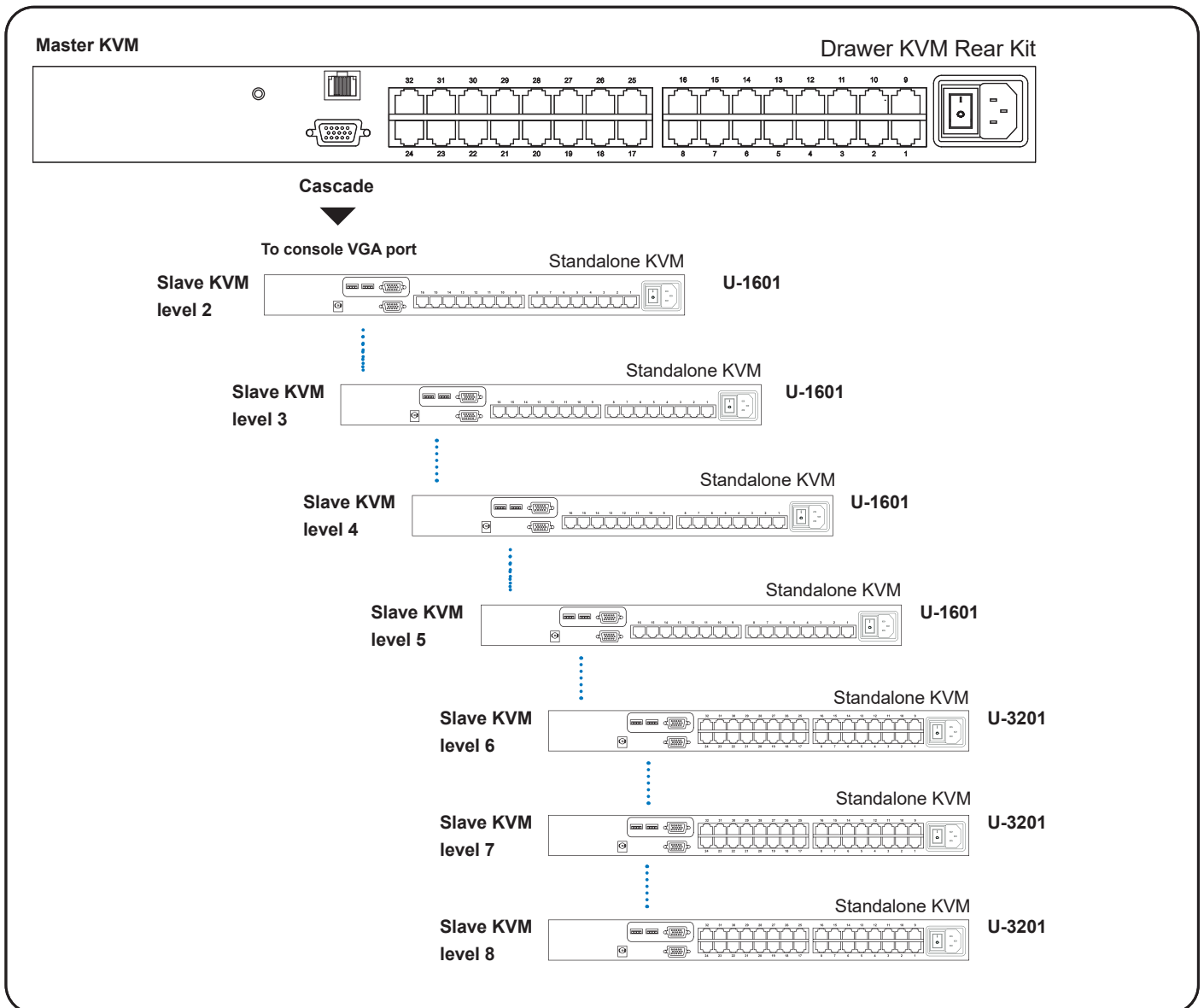
- Cascade up to 8 levels, 256 servers
- Cascading multiple KVM with CBC-6 cascade cable.



Cascaded KVMs from level 2 to 8 must be the models of U-801 / U-1601 / U-3201.



When multiple Cat6 KVMs cascade together, the master KVM at level 1 will take all control of other slave KVM switches (e.g. level 2 to 8).



CBC-6

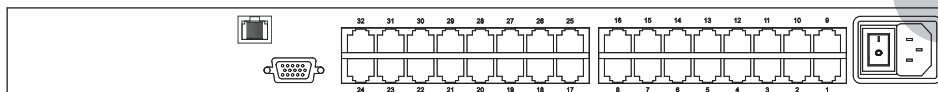
- 6ft Combo KVM cascade cable

-UIP802		-UIP1602		-UIP3202	
<div><div></div><div>KVM Port</div></div>					
Number of ports :		8, 16 or 32			
Connector :		RJ-45			
Connectivity :		DVI-D / VGA connector dongle up to 40 meters (132 feet) via Cat6 / Cat5 cable			
<div><div></div><div>Local Console :</div></div>					
Nil for LCD console drawer version					
<div><div></div><div>IP Remote Console</div></div>					
Connector :		RJ45 Ethernet			
User management :		15-user login, 1 x active user			
Network protocol :		DHCP / BOOTP / DNS			
Security :		SSL v3, RSA, AES, HTTP / HTTPS, CSR			
Browser :		IE, Firefox, Safari, Netscape			
Resolution support :		4:3 - max. 1600 x 1200			
<div><div></div><div>Expansion :</div></div>					
Up to 256 servers by 8-level cascade					
<div><div></div><div>Compatibility</div></div>					
Hardware :		HP / IBM / Dell PC, Server and Blade Server			
		SUN / Mac			
OS Support :		Windows / Linux / Unix / Mac OS			
<div><div></div><div>Power</div></div>					
Input :		Auto sensing 100 to 240VAC, 50 / 60 Hz			
Option DC :		12V / 24V / 48V / 125V DC input			
Consumption :		Max. 19W			
<div><div></div><div>Regulatory</div></div>					
Safety :		FCC & CE certified			
Environment :		RoHS3 & REACH compliant			
<div><div></div><div>Environmental</div></div>		<div><div></div><div>Operating</div></div>		<div><div></div><div>Storage / Non-operating</div></div>	
Temperature :		0 to 55°C degree		-20 to 60°C degree	
Humidity :		20~90%, non-condensing		5~90%, non-condensing	
Altitude :		16,000 ft		40,000 ft	
Shock :		-		10G acceleration (11ms duration)	
Vibration :		-		10~300Hz 0.5G RMS random vibration	

-U802 / -U1602 / -U3202

- Receiver box for remote console x 1
- Power adapter w/ power cord (for receiver) x 1
- CE-6 6ft Combo KVM cable for receiver box x 1

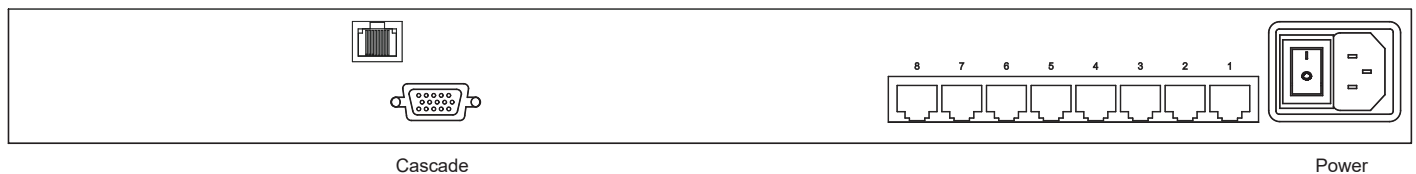
KVM Rear Kit



The power of the KVM rear kit may be changed to external power design based on the LCD console drawer series and model.

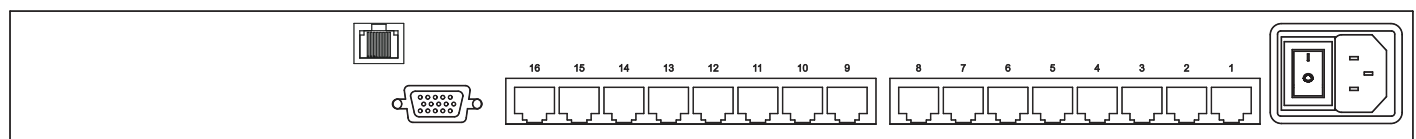
-U802

Remote

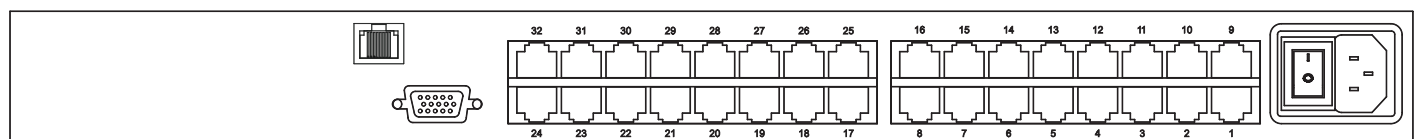


Cascade

-U1602



-U3202





DG-100P
DP-USB dongle



DG-100H
HDMI-USB dongle



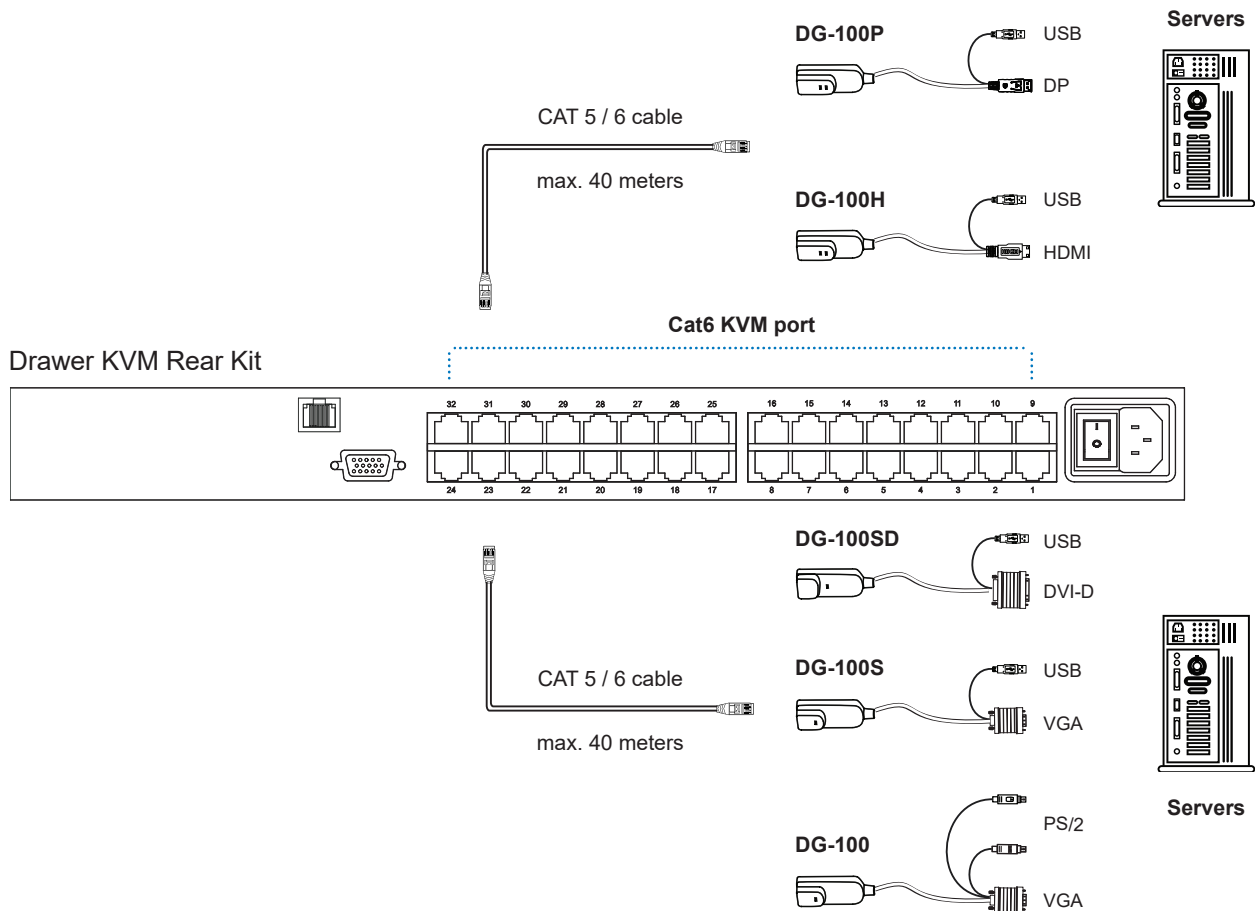
DG-100SD
DVI-USB dongle



DG-100S
VGA-USB dongle

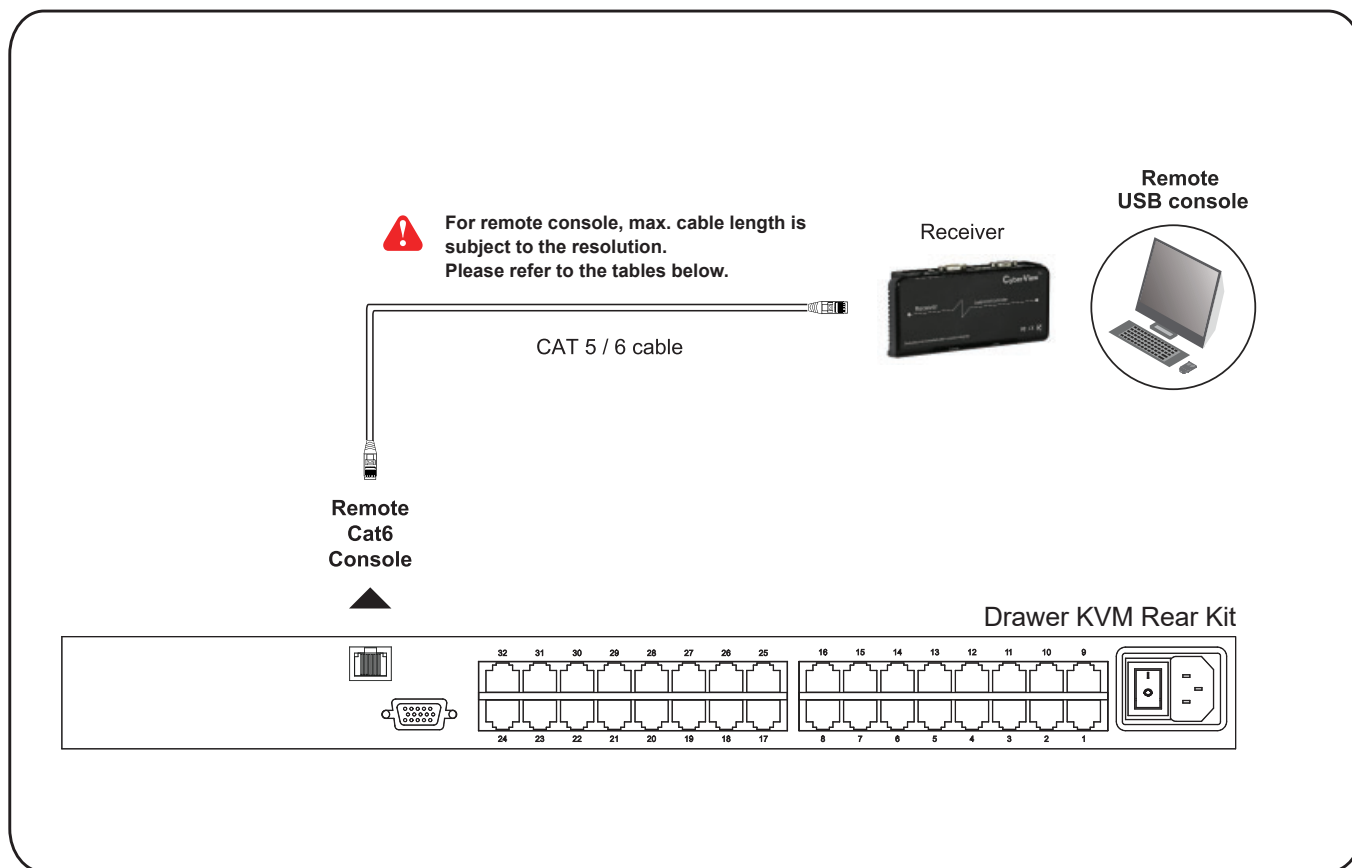


DG-100
VGA-PS/2 dongle



Cat6 Dongle

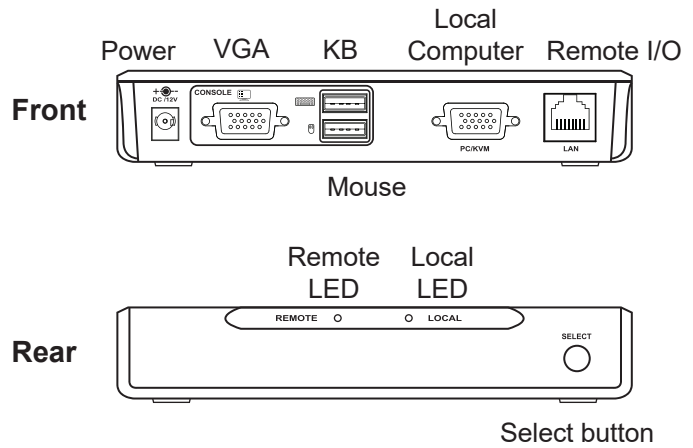
Resolution Support	Frequency (Hz)
1920 x 1200	60
1920 x 1080	60
1600 x 1200	60
1440 x 900	60
1280 x 1024	60
1024 x 768	60 / 70 / 75



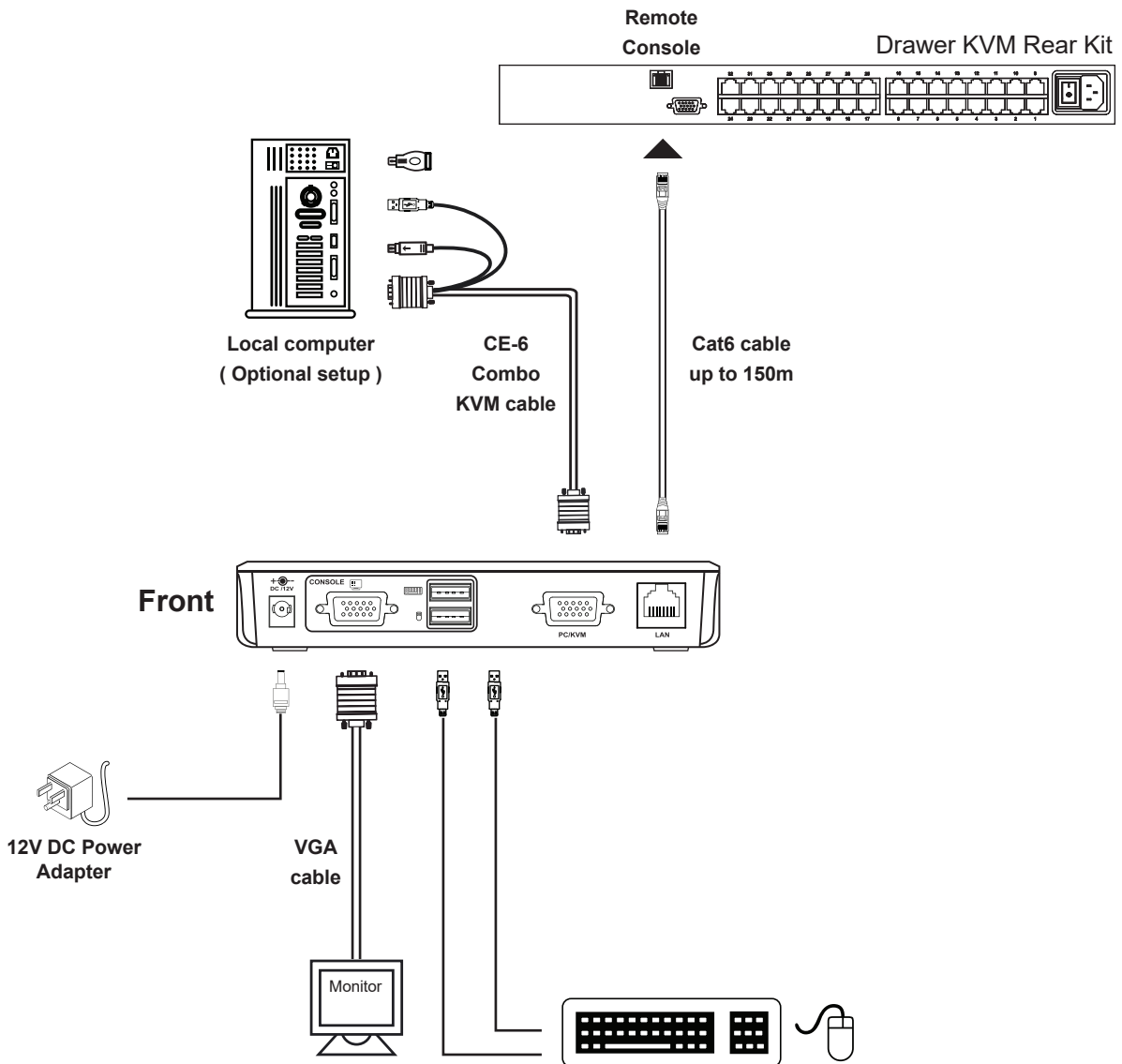
Remote Console

Resolution Support	Frequency (Hz)	Max. Cat6 Cable Length (M)
1920 x 1080	60	50
1920 x 1200	60	50
1600 x 1200	60	100
1440 x 900	60	100
1280 x 1024	60	150
1024 x 768	60 / 70 / 75	150

Receiver



The receiver provides a hotkey function for remote console. Please refer to P.23



< 2.4 > KVM Cascade

Cat6 2-console KVM

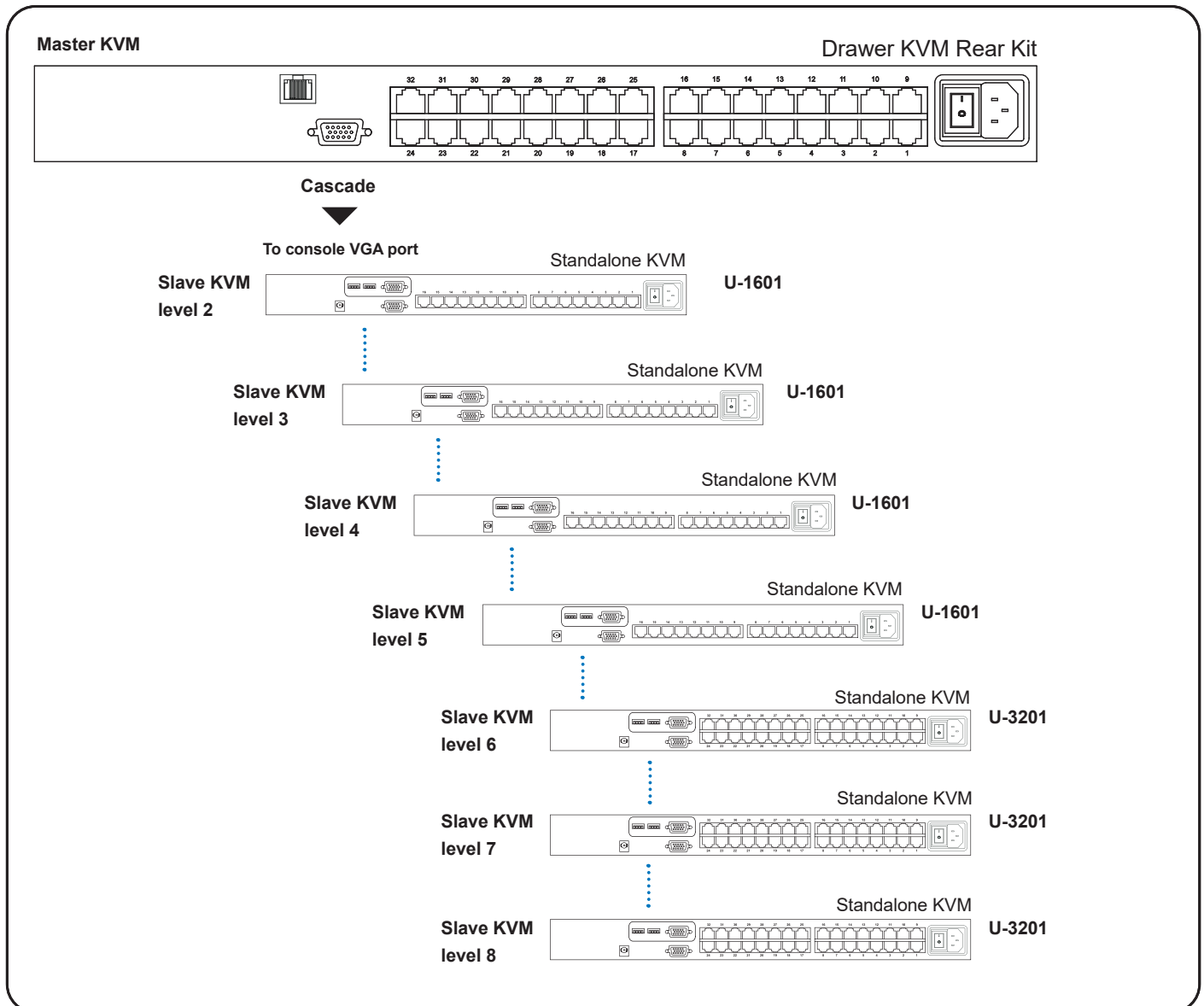
- Cascade up to 8 levels, 256 servers
- Cascading multiple KVM with CBC-6 cascade cable.



Cascaded KVMs from level 2 to 8 must be the models of U-801 / U-1601 / U-3201.



When multiple Cat6 KVMs cascade together, the master KVM at level 1 will take all control of other slave KVM switches (e.g. level 2 to 8).



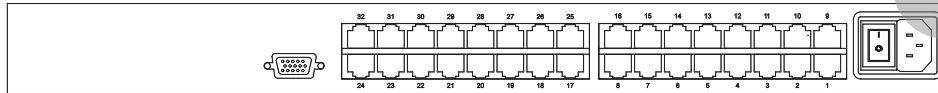
CBC-6

- 6ft Combo KVM cascade cable

	-U802	-U1602	-U3202
■ KVM Port	Number of ports : 8, 16 or 32 Connector : RJ-45 Connectivity : DVI-D / VGA connector dongle up to 40 meters (132 feet) via Cat6 / Cat5 cable		
■ Local Console :	Nil for LCD console drawer version		
■ Remote Console	Connector : 1 x DB 15-pin, VGA Input device : 2 x USB type A for keyboard & mouse Remote I/O : RJ45 via Cat5 / Cat5e / Cat6 cable up to 500 feet Compensation : Auto adjust for cable length Resolution support : 4: 3 - max. 1600 x 1200 16: 9 - max. 1920 x 1080 16:10 - max. 1920 x 1200		
■ Expansion:	Up to 256 servers by 8-level cascade		
■ Compatibility	Hardware : HP / IBM / Dell PC, Server and Blade Server SUN / Mac OS Support : Windows / Linux / Unix / Mac OS		
■ Power	Input : Auto sensing 100 to 240VAC, 50 / 60 Hz Option DC : 12V / 24V / 48V / 125V DC input Consumption : Max. 14W		
■ Regulatory	Safety : FCC & CE certified Environment : RoHS3 & REACH compliant		
■ Environmental	Operating Temperature : 0 to 55°C degree Humidity : 20~90%, non-condensing Altitude : 16,000 ft Shock : - Vibration : -	Storage / Non-operating -20 to 60°C degree 5~90%, non-condensing 40,000 ft 10G acceleration (11ms duration) 10~300Hz 0.5G RMS random vibration	

-U801
-U1601
-U3201

KVM Rear Kit

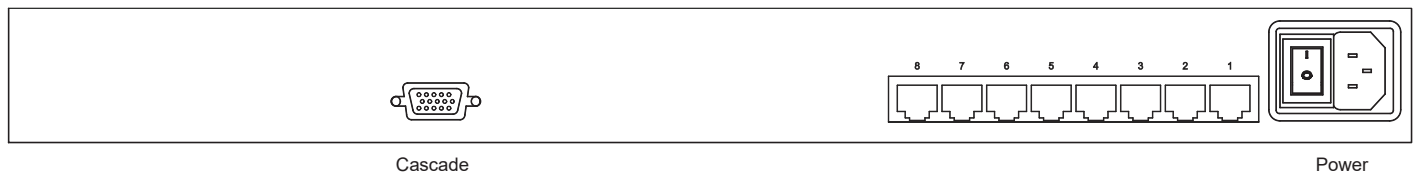


back

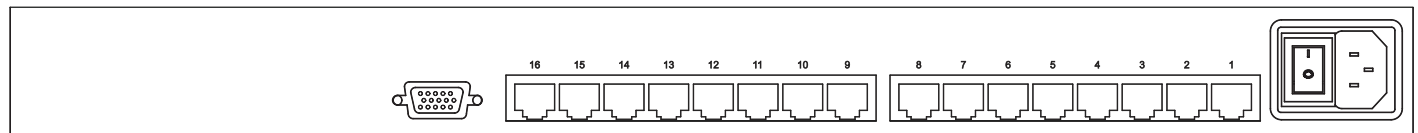


The power of the KVM rear kit may be changed to external power design based on the LCD console drawer series and model.

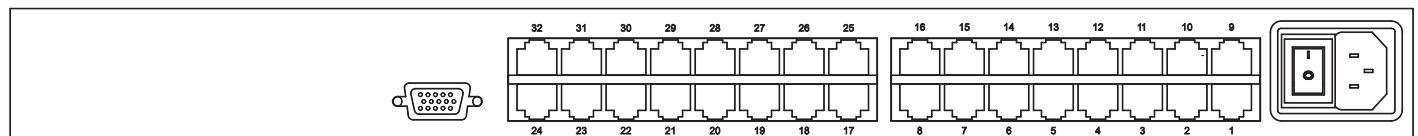
-U801

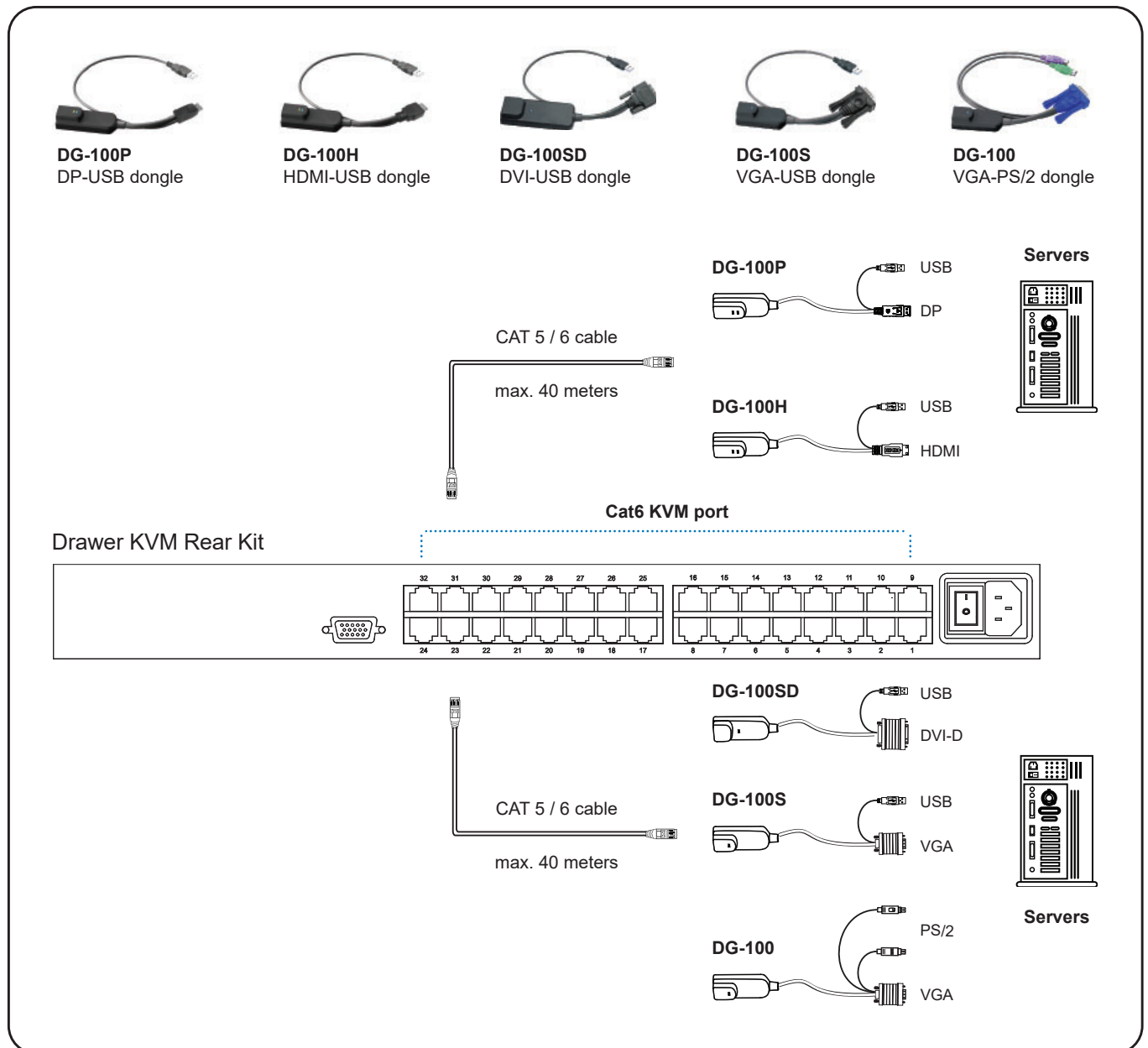


-U1601



-U3201





Cat6 Dongle

Resolution Support	Frequency (Hz)
1920 x 1200	60
1920 x 1080	60
1600 x 1200	60
1440 x 900	60
1280 x 1024	60
1024 x 768	60 / 70 / 75

< 3.3 > KVM Cascade

Cat6 KVM

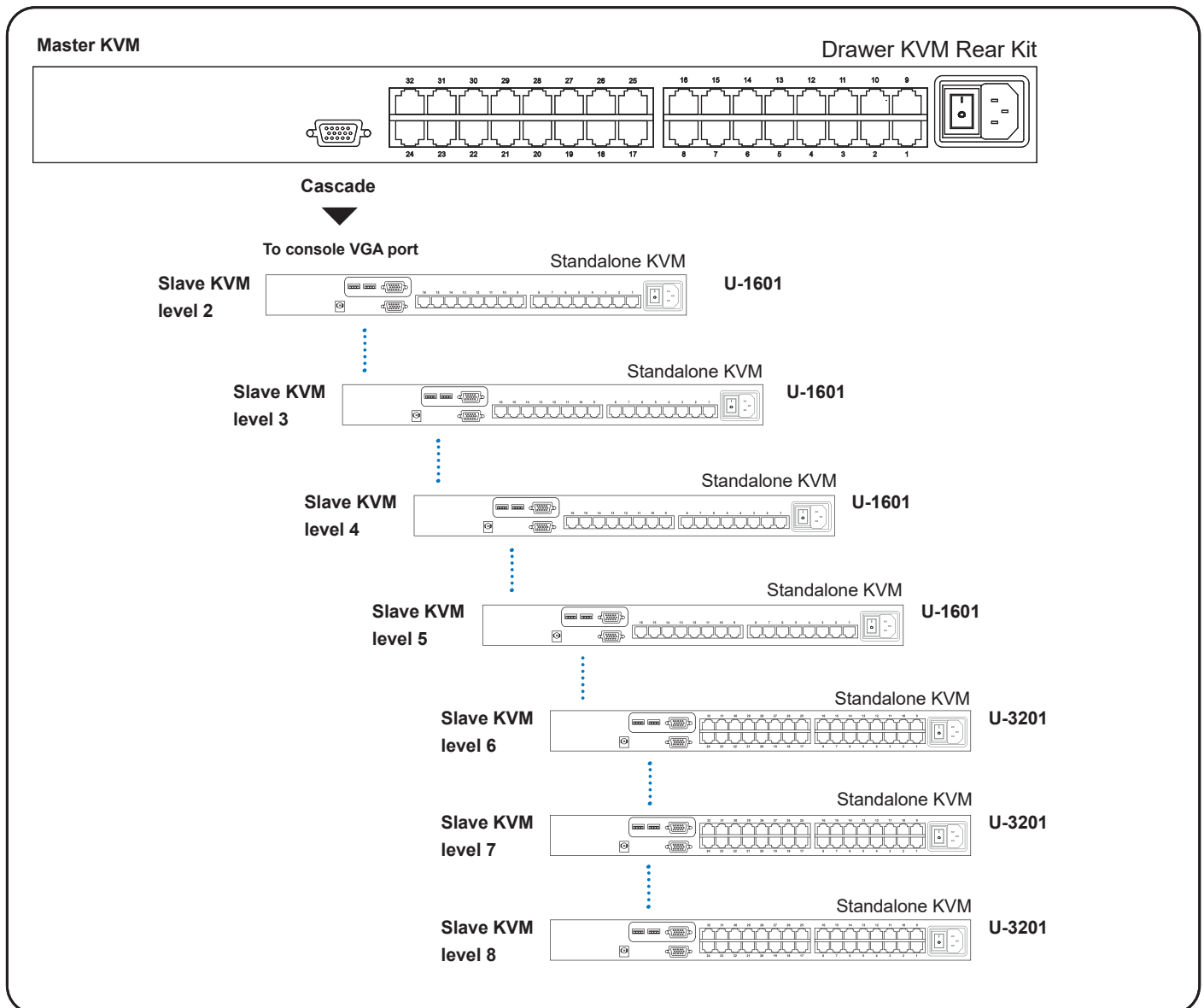
- Cascade up to 8 levels, 256 servers
- Cascading multiple KVM with CBC-6 cascade cable.



Cascaded KVMs from level 2 to 8 must be the models of U-801 / U-1601 / U-3201.



When multiple Cat6 KVMs cascade together, the master KVM at level 1 will take all control of other slave KVM switches (e.g. level 2 to 8).



CBC-6

- 6ft Combo KVM cascade cable

	-U801	-U1601	-U3201
■ KVM Port	Number of ports : 8, 16 or 32 Connector : RJ-45 Connectivity : DVI-D / VGA connector dongle up to 40 meters (132 feet) via Cat6 / Cat5 cable		
■ Local Console :	Nil for LCD console drawer version		
■ Management	Multilingual OSD : English, France, German, Spanish, Italian, Russian, Simplified Chinese, Japanese Hotkey combination : Scroll-lock, Cap-lock, Num-lock, Alt, Ctrl & Win Security : Password enable & disable, up to 8 users profile for port access PC Selection : Front button, OSD menu & hotkey		
■ Expansion:	Up to 256 servers by 8-level cascade		
■ Compatibility	Hardware : HP / IBM / Dell PC, Server and Blade Server OS Support : SUN / Mac Windows / Linux / Unix / Mac OS		
■ Power	Input : Auto sensing 100 to 240VAC, 50 / 60 Hz Option DC : 12V / 24V / 48V / 125V DC input Consumption : Max. 11W		
■ Regulatory	Safety : FCC & CE certified Environment : RoHS3 & REACH compliant		
■ Environmental	Operating Temperature : 0 to 55°C degree Humidity : 20~90%, non-condensing Altitude : 16,000 ft Shock : - Vibration : -	Storage / Non-operating -20 to 60°C degree 5~90%, non-condensing 40,000 ft 10G acceleration (11ms duration) 10~300Hz 0.5G RMS random vibration	

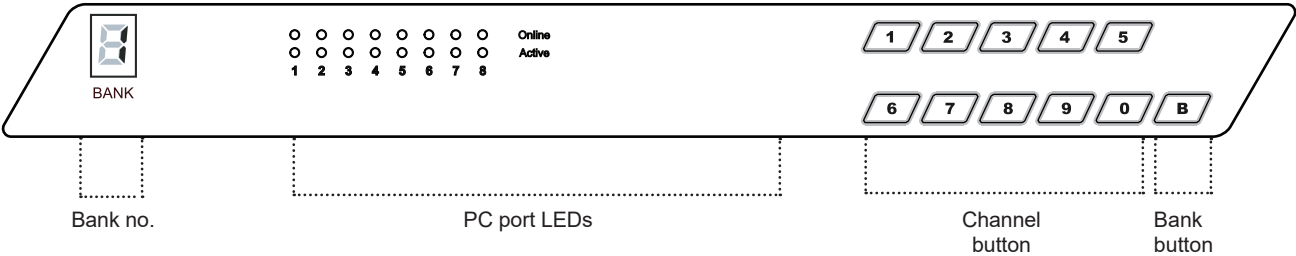
< 4.1 > KVM Button

Power ON

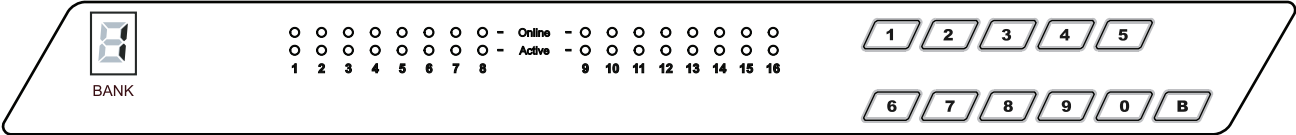
- Turn off all servers and KVM switches
- Make sure all cables / connectors are properly connected
- Recommend Power ON sequence is monitor, KVM switch finally computer

Front Panel - Port LED Indications

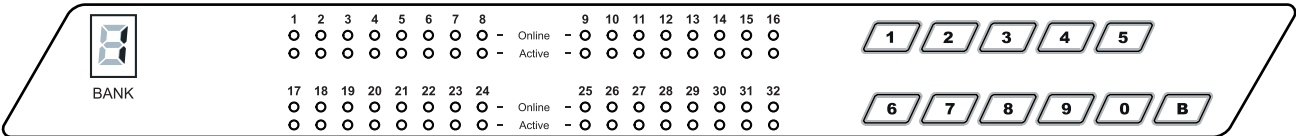
8 ports



16 ports



32 ports



Bank no.	7-Segment BANK LED indication
PC port LEDs	Online : Blue LED on indicating a PC is connecting to the port Active : Green LED on indicating a selected channel
Channel button	Press to select channel from 01 to 32
Bank button	Select the bank from 1 to 8

The password is enabled by default, the default password is “00000000” eight zeros (**Do not use “0” on number pad**)

■ Enable password

1. Press the KVM hotkey **Scroll Lock + Scroll Lock + U**
2. Logout the KVM by pressing the hotkey **Scroll Lock + Scroll Lock + P**
3. In SUPERVISOR level, enter “00000000” eight zeros in user name & password field (**Do not use “0” on number pad**)
4. In USER level, press **Space bar** + **Enter** in user name & password field

Remark: Automatic logout after 10 minutes of inactivity

■ Set your own user name & password

1. Login the KVM in SUPERVISOR level by pressing “00000000” eight zeros in user name & password field
2. Call KVM OSD menu by pressing the KVM hotkey **Scroll Lock + Scroll Lock + Space Bar**
3. Press **F1** to the MAIN MENU
4. Select “USER SECURITY”
5. Set password in SUPERVISOR & USER level
 - a. In the left-top row “S” (SUPERVISOR), press **Enter** to set your own user name & password
 - b. In the row 1 to 8 (USER), press **Enter** to set your own user name & password
6. Press **Enter** to save the setting or press **Esc** to cancel the editing without any change

Remark: a. Blank has underscore, while SPACE doesn't have

b. Press any alphanumeric key to move to next input item. SPACE is treated as a valid character

■ Change your password

1. Login the KVM in SUPERVISOR level by pressing your own user name & password
2. Call KVM OSD menu by pressing the KVM hotkey **Scroll Lock + Scroll Lock + Space Bar**
3. Press **F1** to the MAIN MENU
4. Select “USER SECURITY”
5. Change password in SUPERVISOR & USER level
 - a. In the left-top row “S” (SUPERVISOR), press **Enter** to change your user name & password
 - b. In the row 1 to 8 (USER), press **Enter** to change your user name & password
6. Press **Enter** to save the setting or press **Esc** to cancel the editing without any change

Remark: a. Blank has underscore, while SPACE doesn't have

b. Press any alphanumeric key to move to next input item. SPACE is treated as a valid character

■ Disable your password

1. Press the KVM hotkey **Scroll Lock + Scroll Lock + U**
2. Logout the KVM by pressing the KVM hotkey **Scroll Lock + Scroll Lock + P**
3. You don't need user name & password to access the KVM OSD menu









■ Forget your password

Please contact your supplier for further support



Remark:

- You must press the KVM hotkey within 2 seconds
- A beep sound will be heard for successful entering KVM hotkey


OSD Menu

PORT NAME			
BANK : 1			F1 : MENU
01	 SYSTEM	01	F2 : LOGOUT
02	 SYSTEM	02	F3 : PREV
03	 SYSTEM	03	ESC : QUIT
04	 SYSTEM	04	ENTER : COMPLETE
05	 SYSTEM	05	↑/↓ : SELECT
06	 SYSTEM	06	PgUp/PgDn :
07	 SYSTEM	07	BANK SELECT
08	 SYSTEM	08	
			USER :
			SUPERVISOR
			SCAN TIME :
			10 SEC FW1V3

OSD operation

	next to the system name	The PC is powered on
	next to the system name	The PC is selected
F1		Access F1 MAIN MENU
F2		Logout the OSD menu
F3		Previous menu
Esc		Cancel / Quit
Enter		Complete / Switch to selected port
↑/↓		Switch to previous or next port
PgUp/PgDn		Switch to previous bank or next bank
1 / 2 / 3 / 4		Display port 01 ~ 08 / 09 ~ 16 / 17 ~ 24 / 25 ~ 32
		Remark: Display port 17 ~ 32 for 32 port model only

F1 Main Menu

MAIN MENU		 X
SELECT OPTION :		
01	LANGUAGE	
02	PORT NAME EDIT	
03	PORT SEARCH	
04	USER SECURITY	
05	ACCESS LIST	
06	HOTKEY	
07	TIME SETTINGS	
08	OSD MOUSE	

01	LANGUAGE	OSD language change
02	PORT NAME EDIT	Define port name
03	PORT SEARCH	Quick searching by port name
04	USER SECURITY	Change password
05	ACCESS LIST	Define user access authority
06	HOTKEY	Change hotkey
07	TIME SETTINGS	Modify scan display time interval
08	OSD MOUSE	Modify OSD mouse speed

Local Console Hotkey	Function
Scroll Lock + Scroll Lock + Space Bar	Calling OSD menu
Right-button mouse + Esc	Calling OSD menu
Scroll Lock + Scroll Lock + ↑	Switch to previous port
Scroll Lock + Scroll Lock + ↓	Switch to next port
Scroll Lock + Scroll Lock + PgUp / PgDn	Switch to previous bank or next bank
Scroll Lock + Scroll Lock + Bank no. + Port no.	Switch to specific port
Scroll Lock + Scroll Lock + B	Turn the buzzer ON and OFF * Default the buzzer is ON
Scroll Lock + Scroll Lock + P	Logout the KVM if password security is ON. Show up the status windows

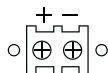
Advance hotkeys (for Supervisor login only)

Scroll Lock + Scroll Lock + S	Activate auto-scan mode for connected servers *Press any key to exit the auto-scan mode
Scroll Lock + Scroll Lock + R	Reset all the KVM settings to factory default *Except User Security settings
Scroll Lock + Scroll Lock + U	Disable and enable password security *Default security is ON
Scroll Lock + Scroll Lock + L	To enable / disable the screen saving function and 10 minutes auto-logout *Default the screen saving is OFF

Remarks:

- Example of “**Scroll Lock + Scroll Lock + Bank no. + Port no.**”
 - Bank No. : 1 to 8
 - Port No. : 01 to 32
 - e.g. Bank 1 Port 4 : **Scroll Lock + Scroll Lock + 1 + 0 + 4**
 - e.g. Bank 2 Port 16 : **Scroll Lock + Scroll Lock + 2 + 1 + 6**
- You must press the hotkey within 2 seconds
- A beep sound will be heard for successful entering
- The numeric keypad is not supported, while in OSD screen, the arrow keys, PgUp, PgDn, and Enter keys are supports

Remote Console Hotkey	Function
Scroll Lock + Scroll Lock + C	Toggle switch between remote & local port
Scroll Lock + Scroll Lock + Q	Turn the buzzer ON & OFF *Default the buzzer is ON
Scroll Lock + Scroll Lock + S	Activate auto-scan mode for remote & local port *The scan time interval is 5 seconds
Scroll Lock + Scroll Lock + A	Auto-adjust the video signal



Model	12V	24V	48V	125V
Input rating				
Input voltage:	12-Volt	24-Volt	48-Volt	110-Volt
Input range:	9 ~ 18V	18 ~ 36V	36 ~ 75V	66 ~ 160V
Input current				
- No load	50 mA	50 mA	50 mA	35 mA
- Full load	4950 mA	2450 mA	1220 mA	749 mA
Output rating				
Output voltage:	12-Volt	12-Volt	12-Volt	12-Volt
Output current:	4.16A	4.16A	4.16A	6.25A
Efficiency	84%	85%	85%	91%

*** For DC power option :

(1) If the unit with LCD, earthing may be required 

(2) DC power excludes AC power cord.

The company reserves the right to modify product specifications without prior notice and assumes no responsibility for any error which may appear in this publication.

All brand names, logo and registered trademarks are properties of their respective owners.

Copyright 2020 Austin Hughes Electronics Ltd. All rights reserved.