

# CyberView™

## Setup Guideline for new KVM 1080 IP

- IP 1080 Remote Access
- HTML-base & Java-free
- BIOS-level Access
- Quad-core Processor
- Enterprise IP Authentication



Designed and manufactured by Austin Hughes

 Please make sure to follow the below steps to setup your KVM IP properly.

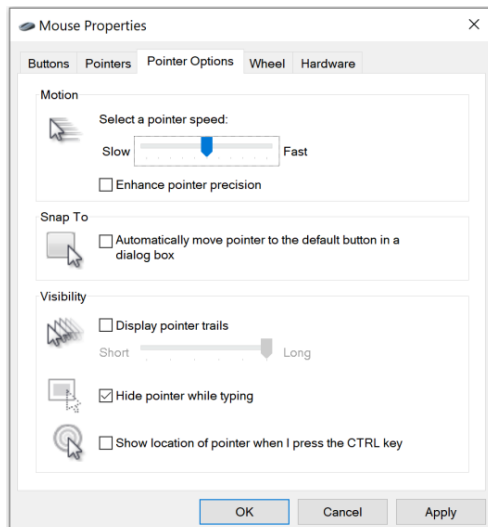
## I. Configure the target server

The target server is the server that connected to the IP KVM Switch. Before use IP remote access, you need to turn off mouse acceleration of all target servers. Please refer to below for Windows operating system.

### Mouse setting

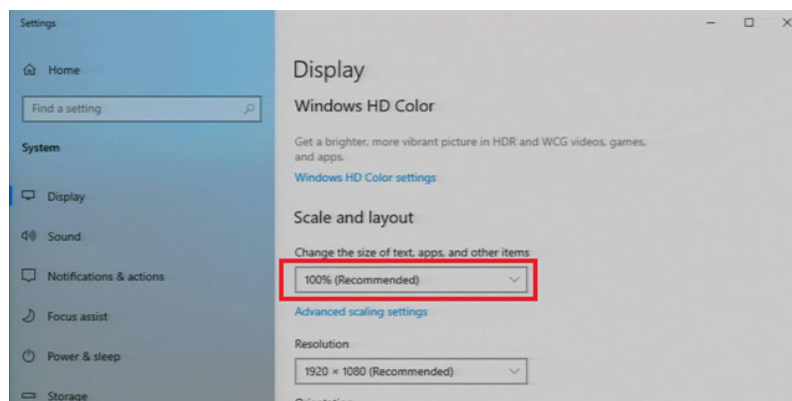
From the Control Panel, double-click the Mouse icon to open the Mouse Properties dialog box.

1. Move the pointer speed slider to the default of 50%.  
( the middle of the slider or the sixth tick from the left ).
2. Uncheck “*Enhance pointer precision*”.
3. Uncheck “*Automatically move pointer to the default button in a dialog box*” & “*Display pointer trails*”.
4. Windows enables mouse acceleration by default. Make sure you are logged in to windows to check mouse synchronization.
5. Mouse acceleration can only be turned off on a per Windows user basis. If you log in to Windows with a different user name, then you will have to configure mouse properties separately for that user as well.



### Change display scaling setting 100%

1. Open Settings.
2. Click on System.
3. Click on Display.
4. Under the “Scale and layout” section, select the scale 100%.



## II. Logging in to IP KVM

The default IP address is as below:

IP address: 192.168.1.22  
Subnet mask: 255.255.255.0  
Gateway: 192.168.1.1

IP KVM model with single IP port:

- Default address 192.168.1.22

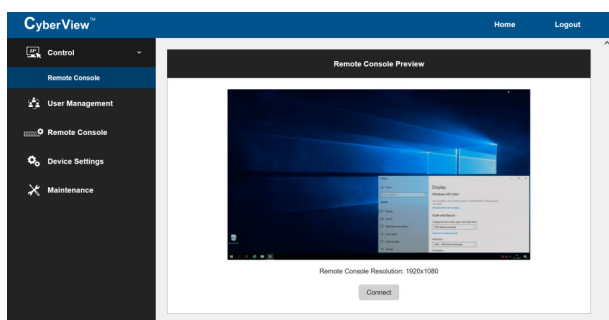
IP KVM model with dual IP ports:

- The 1st IP address 192.168.1.22
- The 2nd IP address 192.168.1.23

To log in to the IP KVM do as follows:

1. Open the browser on the client, in the address bar, enter the default IP KVM address ( 192.168.1.22 )

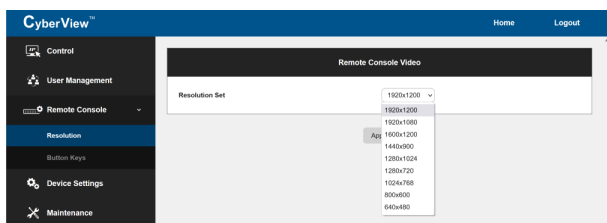
2. In login dialog box, enter the user name and password, then click **Login**, the default user name is **super** and the default password is **pass**.
3. The IP KVM GUI is displayed, and the navigation bar is on left-side.



## III. Configure Remote Console Resolution

The IP remote console displayed on the HTML5-based browser support multiple types of resolution, with a maximum of 1,920 x 1,200.

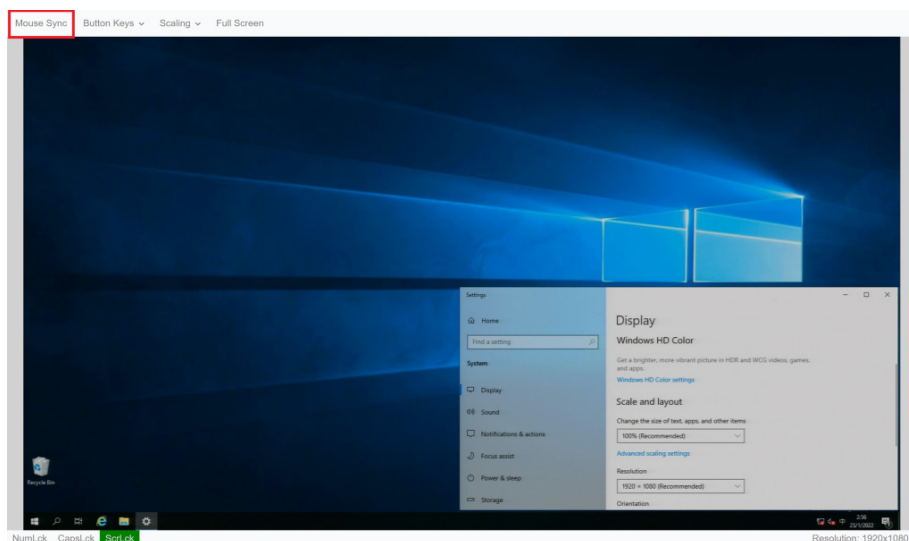
Click **Remote Console** and then **Resolution**, the Remote Console Video page is displayed, select the same resolution as target servers, click **Apply** to save the resolution.



## IV. Launch remote console

Click **Control** and then **Remote console**, the Remote console Preview is displayed, then Click **Connect**, the remote console opens in a separate windows.

When first start, the local mouse is not synchronized with the remote mouse, it appears at a distance to each other, press the **Mouse Sync** once ( positioning top left corner ), the mouse will align.



<b>KVM Console Hotkey</b>	<b>Function</b>
<b>Scroll Lock + Scroll Lock + Space Bar</b>	Calling OSD menu
<b>Right-button mouse + Esc</b>	Calling OSD menu
<b>Scroll Lock + Scroll Lock + ↑</b>	Switch to previous port
<b>Scroll Lock + Scroll Lock + ↓</b>	Switch to next port
<b>Scroll Lock + Scroll Lock + PgUp / PgDn</b>	Switch to previous bank or next bank
<b>Scroll Lock + Scroll Lock + Bank no. + Port no.</b>	Switch to specific port
<b>Scroll Lock + Scroll Lock + B</b>	Turn the buzzer ON and OFF * Default the buzzer is ON
<b>Scroll Lock + Scroll Lock + P</b>	Logout the KVM if password security is ON. Show up the status windows

### **Advance hotkeys (for Supervisor login only)**

<b>Scroll Lock + Scroll Lock + S</b>	Activate auto-scan mode for connected servers *Press any key to exit the auto-scan mode
<b>Scroll Lock + Scroll Lock + R</b>	Reset all the KVM settings to factory default *Except User Security settings
<b>Scroll Lock + Scroll Lock + U</b>	Disable and enable password security *Default security is ON
<b>Scroll Lock + Scroll Lock + L</b>	To enable / disable the screen saving function and 10 minutes auto-logout *Default the screen saving is OFF

- Remarks:**
- Example of "Scroll Lock + Scroll Lock + Bank no. + Port no."
    - Bank No. : 1 to 8
    - Port No. : 01 to 16
    - e.g. Bank 1 Port 4 : **Scroll Lock + Scroll Lock + 1 + 0 + 4**
    - e.g. Bank 2 Port 16 : **Scroll Lock + Scroll Lock + 2 + 1 + 6**
  - You must press the hotkey within 2 seconds
  - The numeric keypad is not supported, while in OSD screen, the arrow keys, PgUp, PgDn, and Enter keys are supports
  - For the OSD usage and password setting, please refer to the KVM user manual for details : [https://www.austin-hughes.com/resource\\_cat/product-resources/rack-kvm-resources/](https://www.austin-hughes.com/resource_cat/product-resources/rack-kvm-resources/)

The company reserves the right to modify product specifications without prior notice and assumes no responsibility for any error which may appear in this publication.

All brand names, logo and registered trademarks are properties of their respective owners.

Copyright 2022 Austin Hughes Electronics Ltd. All rights reserved.