

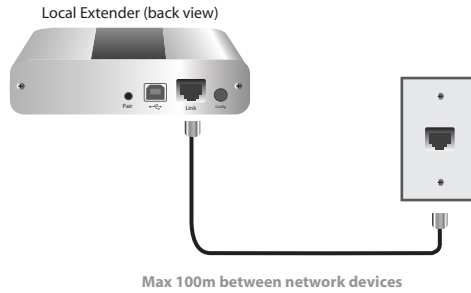
USB 2.0 RG2304GE-LAN
 4-Port USB 2.0 Gigabit
 Ethernet LAN Extender System

Quick
 Start
 Guide

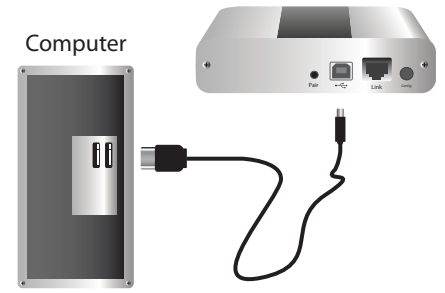
Before you get started, ensure that all the drivers required for your USB device(s) are installed.

Network Connect

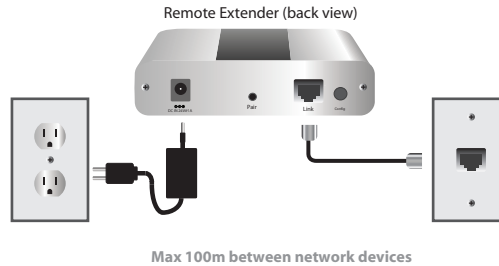
- 1 Place the Local Extender where desired and connect the Cat 5e patch cable from the Link port (RJ45) to a network switch or wall network port connected to a switch.



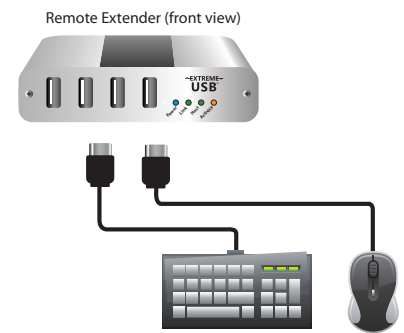
- 2 Connect the Local Extender to the computer using the included USB cable.



- 3 Place the Remote Extender where desired. Connect the Cat 5e patch cable from the Link port (RJ45) to a network switch or wall network port connected to a switch and connect the Remote Extender to a power source.



- 4 Attach USB device(s) to the Remote Extender.

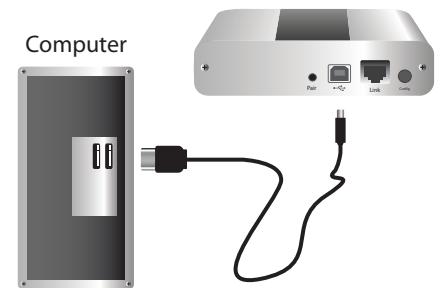


Direct Connect

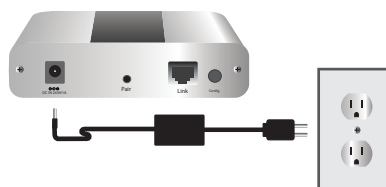
- 1 Place extenders where desired and connect the Cat 5e extension link cabling to the Link ports (RJ45) on the Local and Remote Extender.



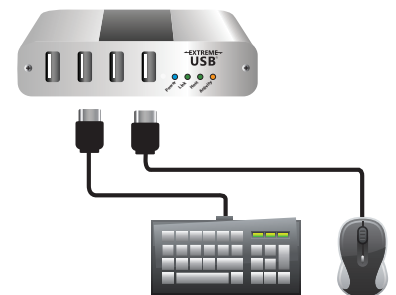
- 2 Connect the Local Extender to the computer using the included USB cable.



- 3 Connect the Remote Extender to the AC adapter and a power source.



- 4 Attach USB device(s) to the Remote Extender.



Certification and Compliance

FCC Radio Frequency Interference Statement Warning

This device complies with part 15 of the FCC Rules. Operation is subject to the following two conditions: (1) this device may not cause harmful interference, and (2) this device must accept any interference received including interference that may cause undesired operation.

CE Statement

We, declare under our sole responsibility that the product, to which this declaration relates, is in conformity with European Standard EN 55022, EN 61000 and EN 55024.

IC Statement

This Class B digital apparatus complies with Canadian ICES-003.



Information contained herein is subject to change without notice. 90-01102-A04